

Working Instructions

- mechanical -



Xperia™ XA Ultra

F3211, F3212, F3213, F3215, F3216

CONTENTS

1	Exterior Views.....	4
1.1	F3211, F3212, F3213, F3215, F3216.....	4
2	Tools	5
3	Mandatory Replacement	7
4	Disassembly.....	8
4.1	SIM Tray	8
4.2	Back Cover Assy	8
4.3	Rear Cover	10
4.4	Antenna Module	13
4.5	Side Panel Assy Keys	13
4.6	Main PBA & Front Cover Assy	14
5	Replacement	17
5.1	SIM Tray	17
5.2	Back Cover Assy	17
5.3	Rear Cover	17
5.4	Antenna Module	17
5.5	Side Panel Assy Keys	18
5.6	2nd Mic Mesh.....	19
5.7	Adhesive Back Cover and Adhesive Main Camera of Back Cover .	20
5.8	Adhesive Side Panel Assy Cap Side.....	22
5.9	Adhesive Side Panel Assy Keys Side	24
5.10	Battery & Adhesive Embedded Battery	26
5.11	Black Conductive Gasket	28
5.12	Camera Front 16 MPixel CMOS & Adhesive Front Camera	29
5.13	Camera Main 21 MPixel CMOS	32
5.14	Coaxial Cable Black	33
5.15	Coaxial Cable White	35
5.16	Ear speaker & Adhesive Ear speaker	37
5.17	Front Cover Assy	39
5.18	Label Tray	40
5.19	Liquid Indicator	41
5.20	Main Camera Adhesive	42
5.21	Main Mic Mesh.....	43
5.22	PBA Flash LED and Adhesive PBA Flash LED	44
5.23	P-Sensor Rubber	46
5.24	Rear Cover Adhesive 1	47
5.25	Rear Cover Adhesive 2	48
5.26	Rear cover Thermal Sheet	49
5.27	Side Panel Assy Cap.....	50

5.28 SIM Cap.....	53
5.29 Speaker Mesh Deco	54
5.30 Vibrator & Adhesive Vibrator	55
5.31 CU label.....	57
5.32 Board Swap – Replacement	59
5.33 Board Swap – Change Label	59
5.34 Board Swap – Customize of Software	59
6 Reassembly.....	60
6.1 Front Cover Assy & Main PBA	60
6.2 Adhesive Side Panel Assy Keys Side	61
6.3 Side Panel Assy Keys	63
6.4 Antenna Module	65
6.5 Rear Cover	66
6.6 Back Cover Assy.....	67
6.7 SIM Tray	70
7 Revision History	71

**For general information about mechanical repair related issues, refer to
1220-1333: Generic Repair Manual - mechanical**

**Battery cannot be reused once disassembled. And always do not damage the Battery when repair!
Before assemble the Battery Cover Assy carefully check the followings. If it is fail, scrap the
Battery.**

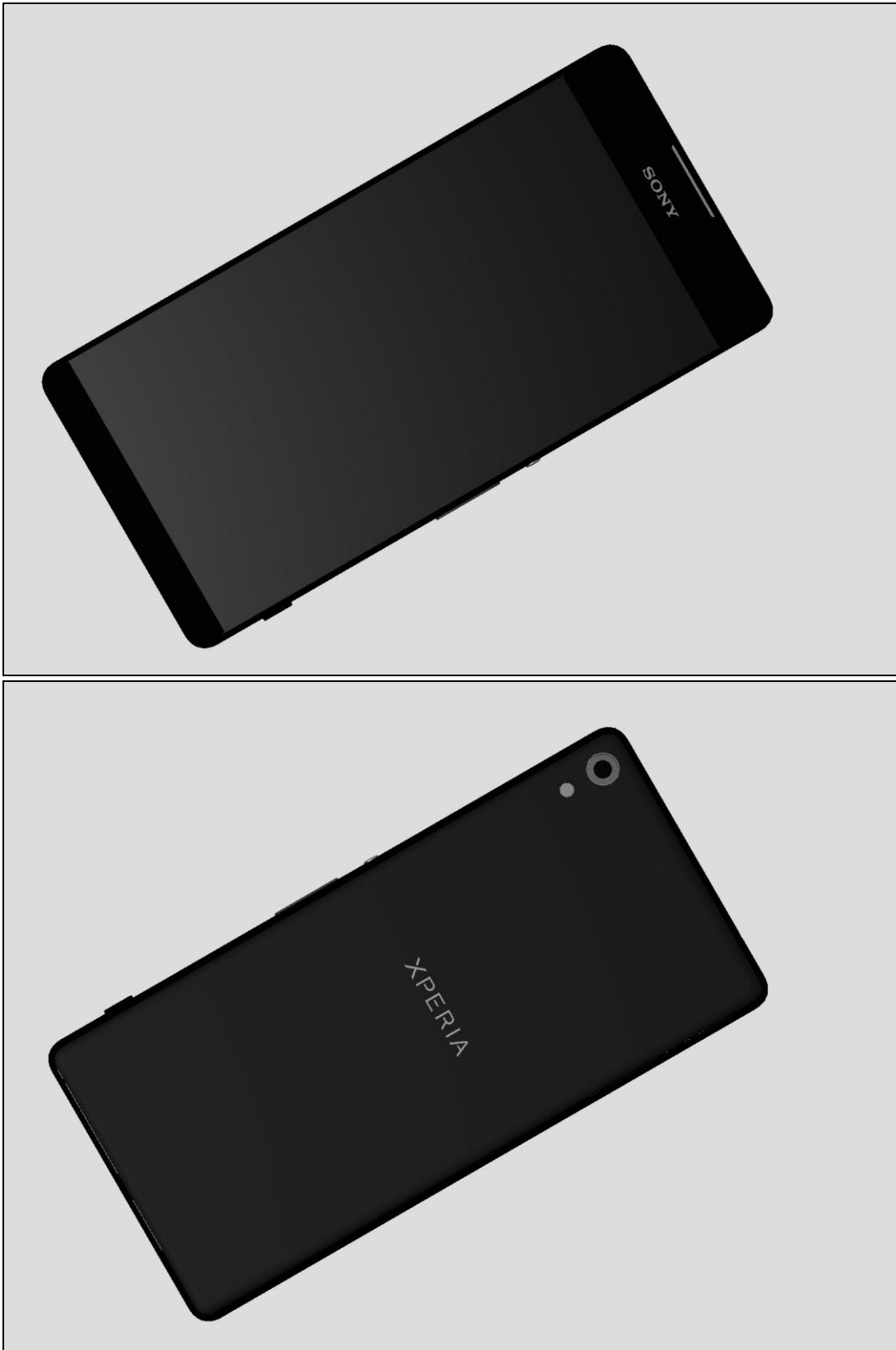
- **Check if the Battery has any physical damages such as deformed, bent, dent, dimple, bubbles, swelled, pinholes, punctures, wrinkles, and so on. If the Battery has damages, scrap the Battery.**
- **Remove any foreign materials from the battery surface by cloth wiping or pressure air. If any foreign materials are stuck on the battery permanently and could not be removed, scrap the Battery.**

Battery Handling Notices:

- 1. Don't damage the battery surface with sharp objects.**
- 2. Don't twist or deform the battery in any way.**
- 3. If the battery drop to floor, should not be used, and scrap.**
- 4. Hold the battery at the frame edges of battery.**

1 Exterior Views

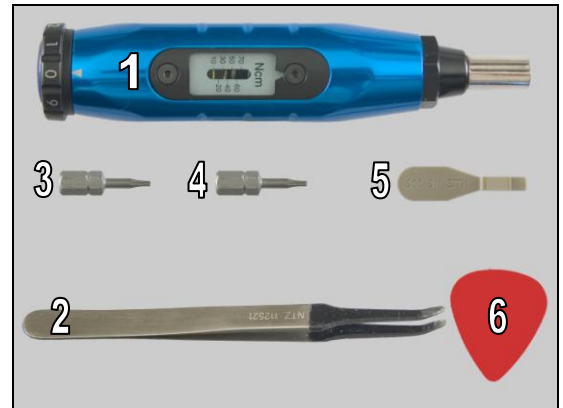
1.1 F3211, F3212, F3213, F3215, F3216



2 Tools

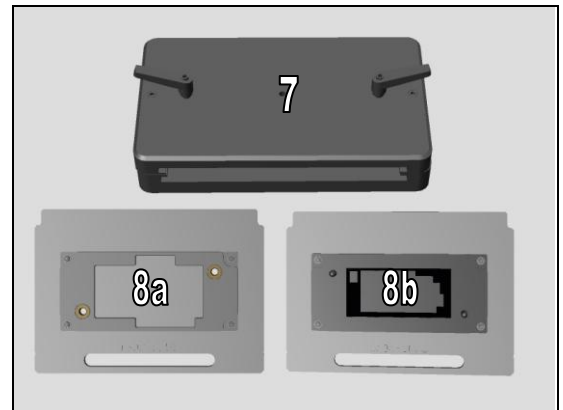
SPECIAL TOOLS

1. Torque Screwdriver
2. Flex Film Assembly Tool
3. Bits (T3)
4. Bits (T5)
5. Front Opening Tool
6. Guitar Pick

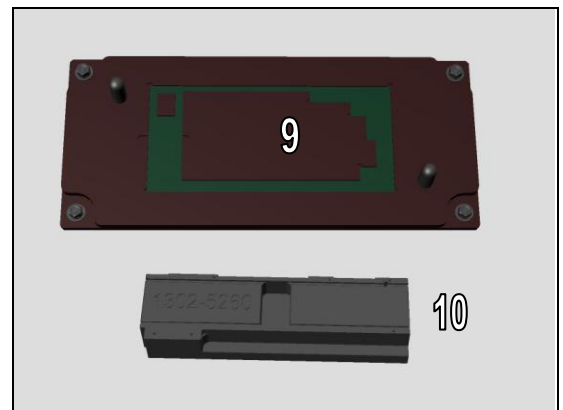


For part no's on the tools above, refer to the 'Tools Catalogue/Matrix'!

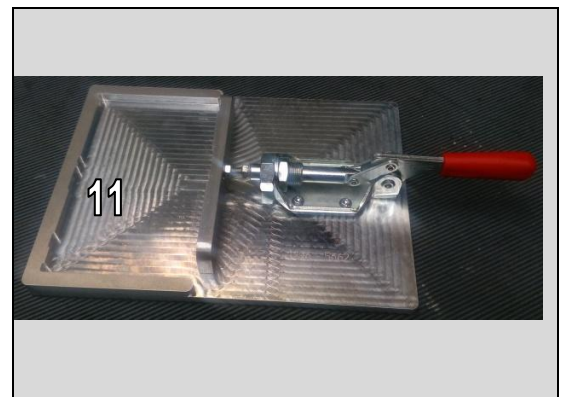
7. Generic Fixture for Presstool (1273-4413)
8. Back Panel Press Top Inlay 8a (1303-1006) /Bottom Inlay 8b (1302-5257)



9. Rear Panel Adhesive Tool (1302-5258)
10. Side Panel Adhesive Tool (1302-5260)



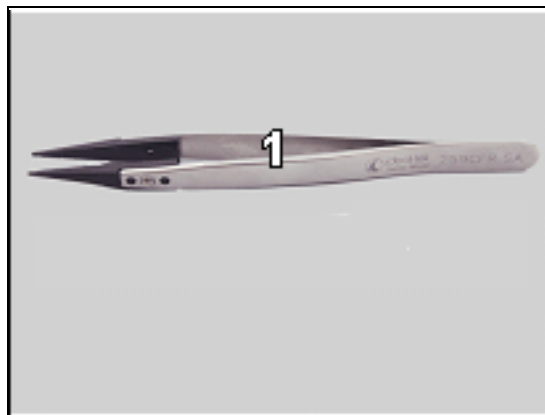
11. Side Panel Press Fixture(1296-5662)



Tools

STANDARD TOOLS

1. Pointed Plastic Tweezers



3 Mandatory Replacement

The Mandatory Replacement Parts List is embedded.
Click the following icon to open the file.



How to use the Mandatory Replacement Parts List:

Targeted replacement parts are listed

Mandatory replacement part	SPACE	Refurbish	Target replacement part												FICTIVE Front Camera (Front Camera)	Panel Rear Sub Assy	PBA Complete	PBA Sub	FICTIVE Camera 24.5M (Main Indicator Camera)	Liquid
			Battery 700 mAh	Fingerprint Sensor Module Assy	FPC Key Module	FPC Top Module (Audio Jack)	FPC USB Assy	Front Assy	Loud Speaker (Bottom)	Loud Speaker (Top)	FICTIVE Front Camera (Front Camera)	Panel Rear Sub Assy	PBA Complete	PBA Sub						
Adhesive Battery	1300-0000	2																		
Adhesive Plate SPK	1301-3047	1		1	1			1	1											
Adhesive WR Audio Jack	1301-1010	1				1														
Adhesive WR FPC Speaker	1300-0050	1	1	1	1	1	1	1	1	1					1					
Adhesive WR Holder Speaker	1300-0054	1	1	1	1	1	1	1	1	1					1					
Adhesive WR Light Guide LED	1300-0021	1																		
Adhesive WR Panel Rear	1300-0080	1	1	1	1	1	1	1	1	1					1	1	1	1	1	1
Adhesive WR Speaker (Top speaker)	1300-0041	1																		
Adhesive WR Speaker (Bottom Speaker)	1300-0058	1							1	1										
Battery 2700 mAh	1300-3013		1																	
== F8131 ==																				
Cap Tray Assy Black	1302-3709																			
Cap Tray Assy White	1302-3709																			
Cap Tray Assy Lime	1302-3710																			
Cap Tray Assy Rose	1302-3711																			
== F8132 ==																				
Cap Tray Assy DS Black	1302-3713																			
Cap Tray Assy DS White	1302-3714																			
Cap Tray Assy DS Lime	1302-3715																			
Cushion Assy	1299-9999																			
Cushion PBA Mic 1st	1300-0047	1									1									
Cushion PBA Mic 2nd	1300-0040														1					
Cushion PBA USB	1301-1088																			
FICTIVE Camera 24.5M (Main Camera)	1293-8220																		1	
FICTIVE Front Camera (Front Camera)	1299-4015														1					
FP Sensor Assy	1302-3718	1		1																
FPC Assembly USB	1299-3962	1					1													
FPC Key Module Assy	1299-3990				1															
FPC Top Module Assy (Audio Jack)	1299-3991	1				1														
Front Assy Black	1302-3071																			
Front Assy White	1302-3075							1												
Front Assy Lime	1302-3063																			
Front Assy Rose	1300-3066																			
Label MoP	1298-7979	1													1					
Label NFC	1299-9084	1							1											
Liquid Indicator	1275-3307	1					1													1
Loudspeaker (Top Speaker)	1287-2024	1					0	1	0	1										
Panel Rear Sub Assy Black	1300-1415																			
Panel Rear Sub Assy White	1300-1416														1					
Panel Rear Sub Assy Lime	1301-3311																			
Panel Rear Sub Assy Rose	1301-3312																			
PBA Complete														1						
Plate Holder Key Ant	1300-0020				1															
Plate Jk	1300-0050	1		1	1				1	1										
Plate Speaker	1300-0081	1			1															
Screw M1.2X2.5	1301-5399	1	1	1	1	1	1	1	1	1					1	1			1	
Screw M1.4X3.2	1282-4308	5	5	5	5	5	5	5	5	5					5	5	5	5	5	
Sheet Guide MoP	1298-2803	1																		
Sheet Spacer RF	1300-0048																			
Sheet WRT Test	1300-0067	1							1											
Speaker (Bottom Speaker)	1277-7135	1							1	1										
Sub PBA	1299-7823																	1		
TGF Applying		1							1											

Mandatory replacement parts for refurbishment.

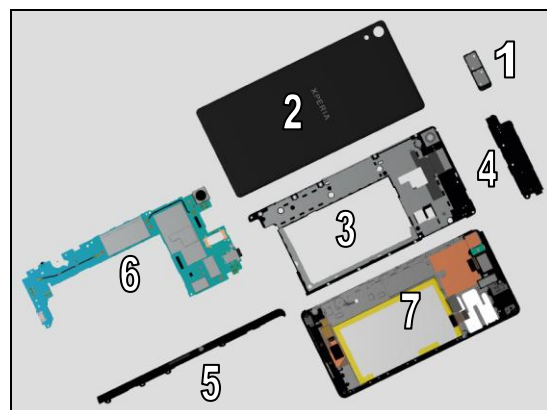
Parts that is required to replace in addition to failure target parts.

Number of parts require to replace is indicated.
Number in the cells indicates parts require replacing for target part.

4 Disassembly

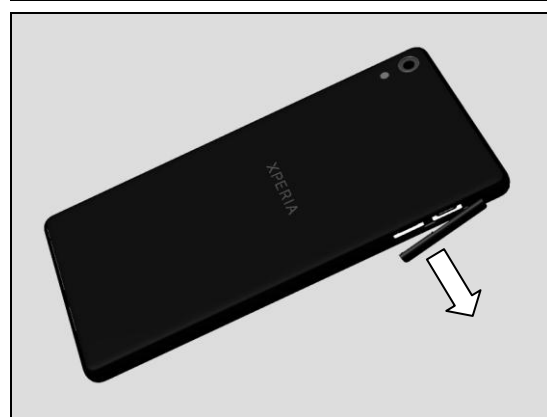
The disassembly is done in the following order:

1. SIM Tray
2. Back Cover Assy
3. Rear Cover
4. Antenna Module
5. Side Panel Assy Keys
6. Main PBA
7. Front Cover Assy

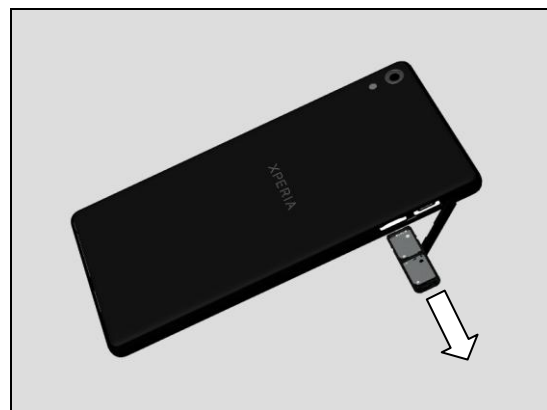


4.1 SIM Tray

Open the SIM Cap.

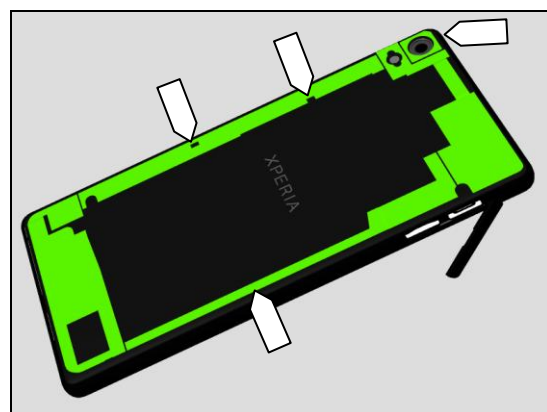


Remove the SIM Tray with fingers.



4.2 Back Cover Assy

There are four hooks and Adhesives as shown position securing the Back Cover Assy.



Disassembly

Insert Guitar Pick at shown position and gently slide long to release Back Cover Assy as shown position.



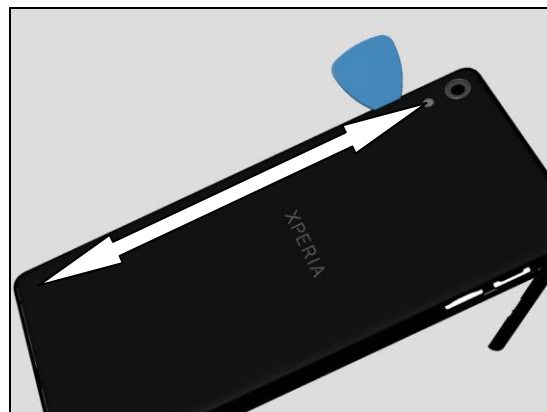
Do the same for the top side.

Avoid Camera Lens area!

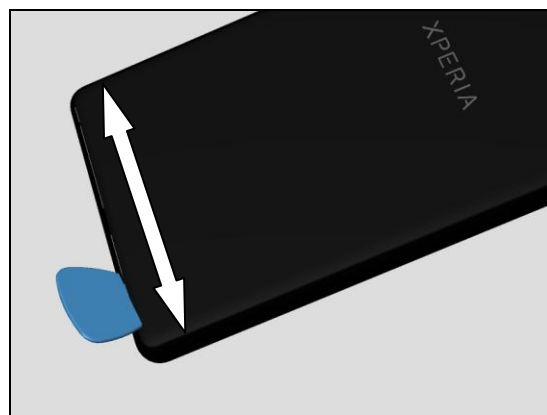


Gently slide long to release this side of Back Cover Assy.

Avoid Camera Lens area!



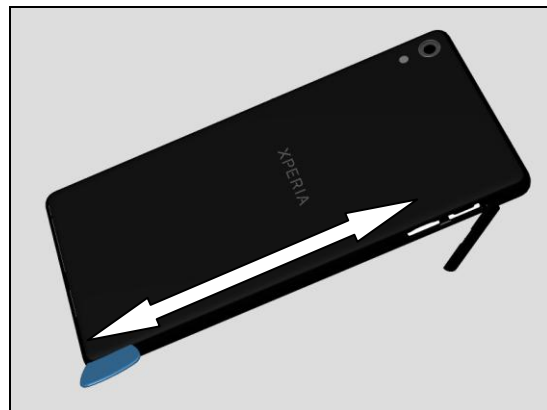
Do the same on the bottom side.



Disassembly

Do the same on this side.

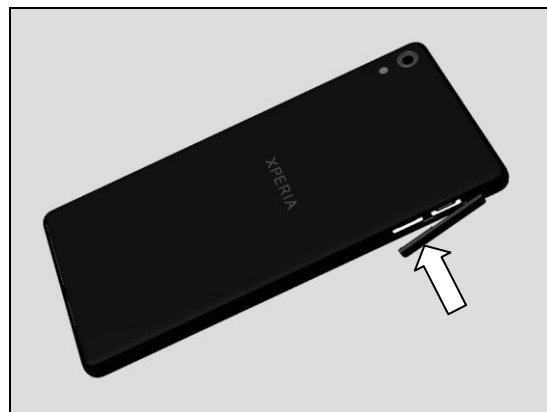
Be careful not to insert too deep to damage the battery!



Detach to remove Back Cover Assy gently.



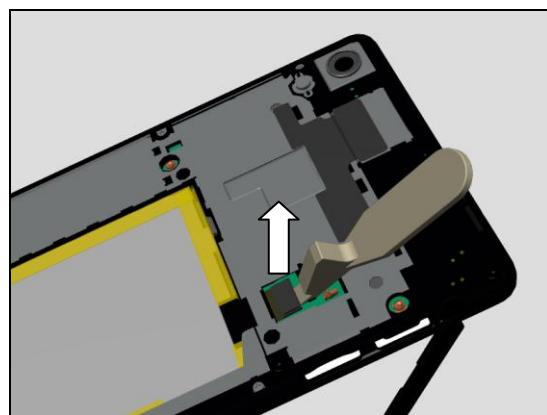
Close the SIM Cap.



4.3 Rear Cover

Disconnect the BtB connector by using the Front Opening Tool as shown.

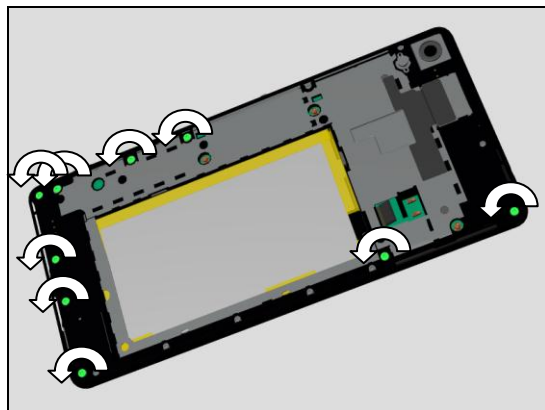
Be careful with small components around the BtB connector!



Disassembly

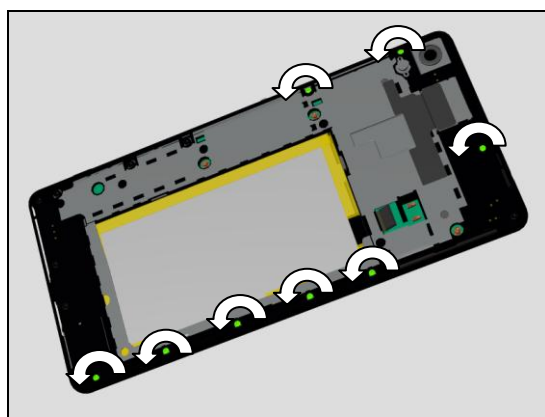
Remove nine Screws by using a screwdriver with Bits T5.

Scrap! Do not reuse!

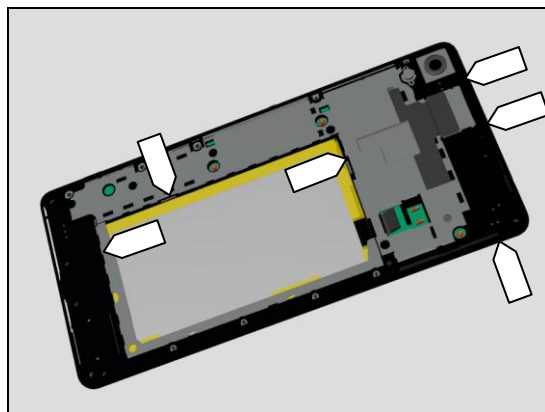


Remove eight Screws by using a screwdriver with Bits T3.

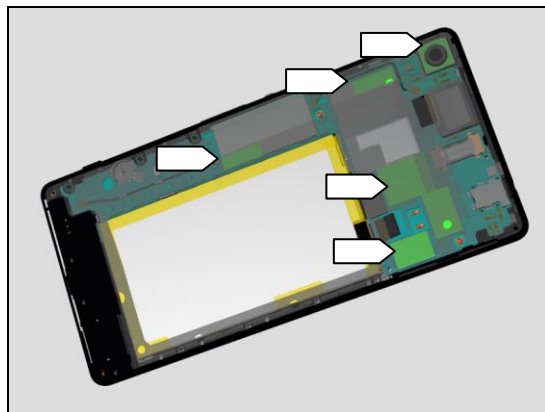
Scrap! Do not reuse!



There are six hooks securing the Rear Cover.

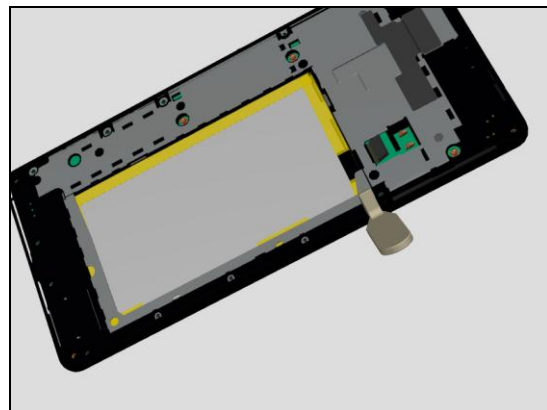


There are 5 pieces adhesives securing the upper side of Rear Cover as shown in the picture.

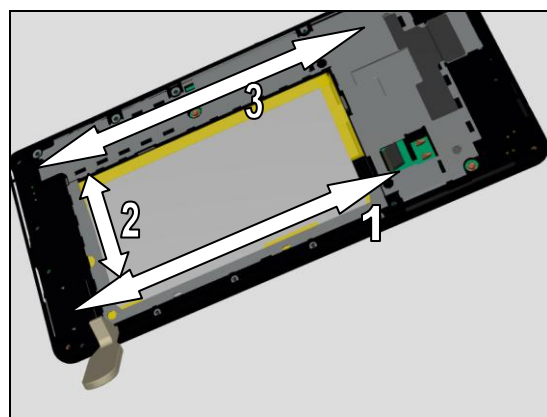


Disassembly

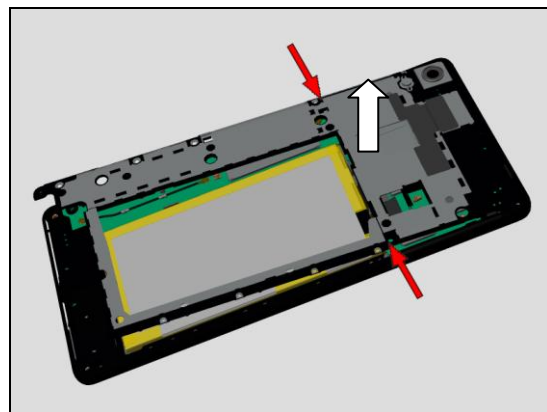
Insert the Front Opening Tool as shown position.



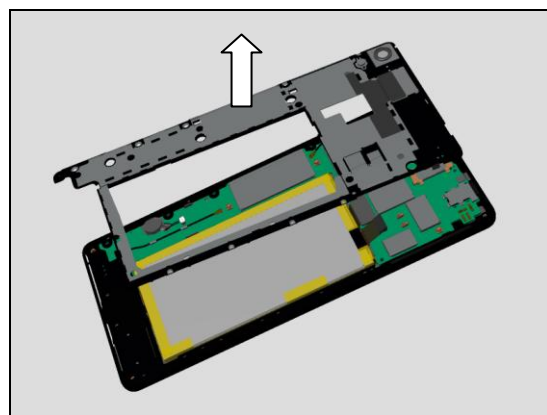
Slide along and release the hooks as shown sequence.



Hold the position as red arrows shown and gently pull upwards to release the Rear Cover from the adhesives underneath.



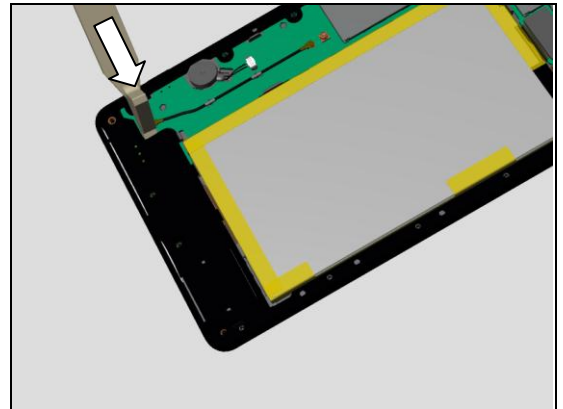
Remove the Rear Cover.



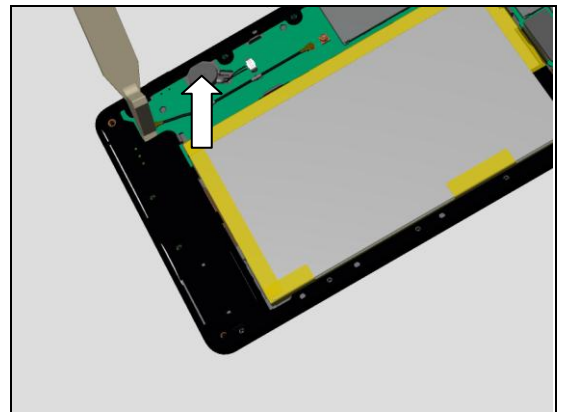
Disassembly

4.4 Antenna Module

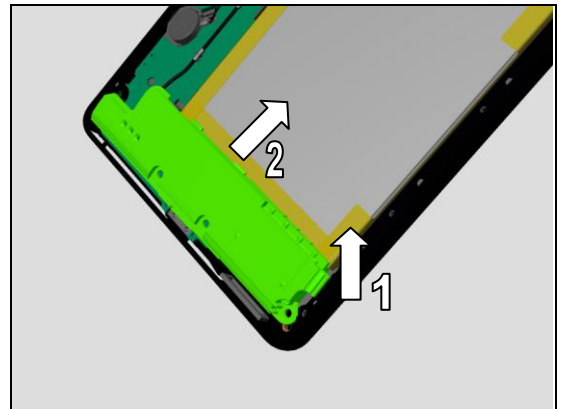
Insert the Front Opening Tool as shown position.



Pull upwards to release the snap hook of Antenna Module.

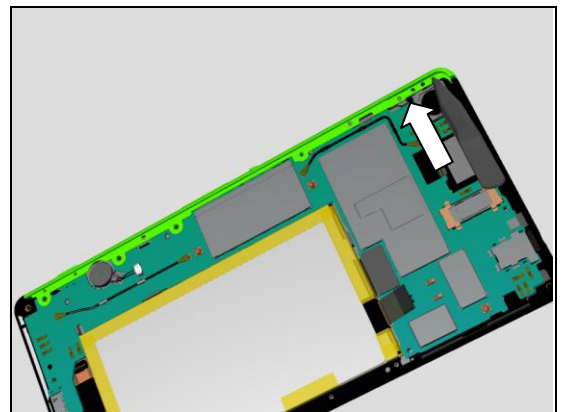


Remove the Antenna Module from its cavity with fingers as shown sequence.



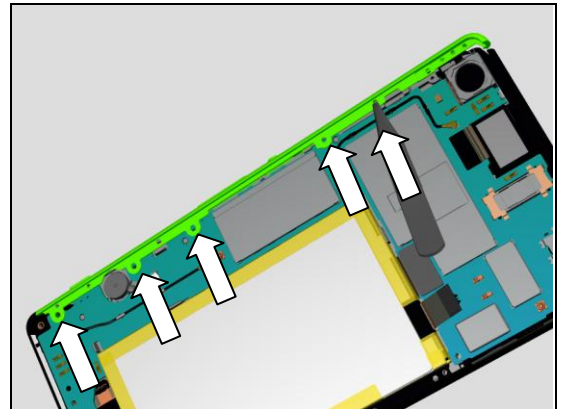
4.5 Side Panel Assy Keys

Insert the plastic tweezers head into the holes as shown.

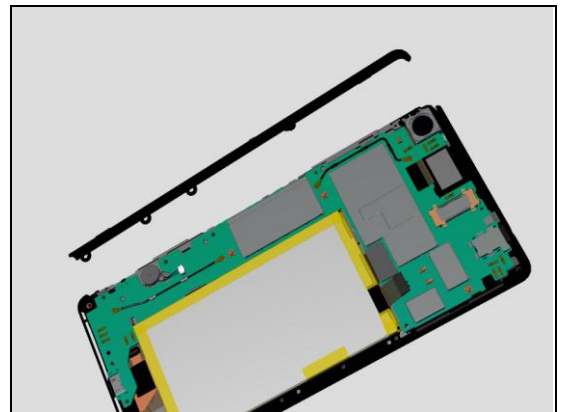


Disassembly

Push to release the Side Panel Assy Keys as Arrows position shown from upper right to lower left corner.



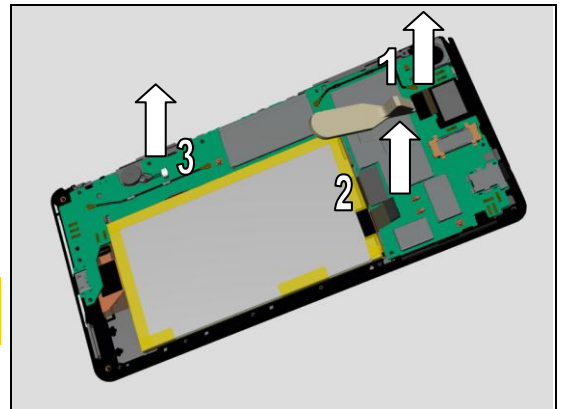
Separate the Side Panel Assy Keys.



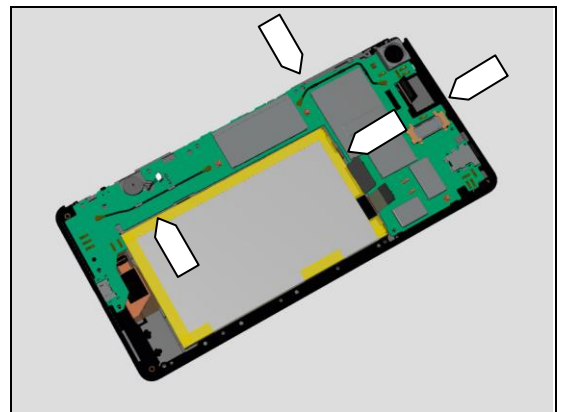
4.6 Main PBA & Front Cover Assy

Unsnap the BtB connectors by using the Front Opening Tool as sequence shown.

Be careful with small components around the BtB connectors!

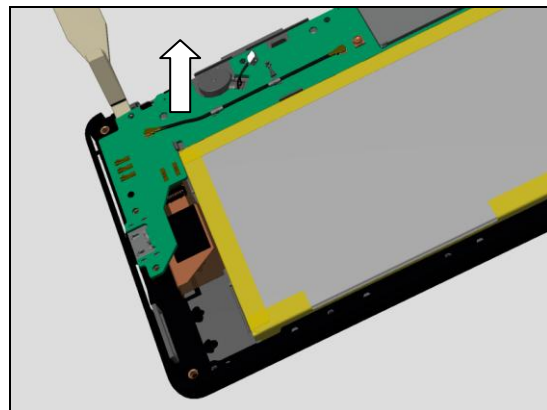


There are 4 hooks securing the Main PBA.

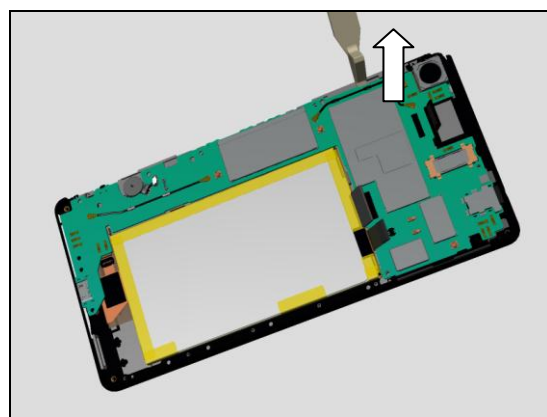


Disassembly

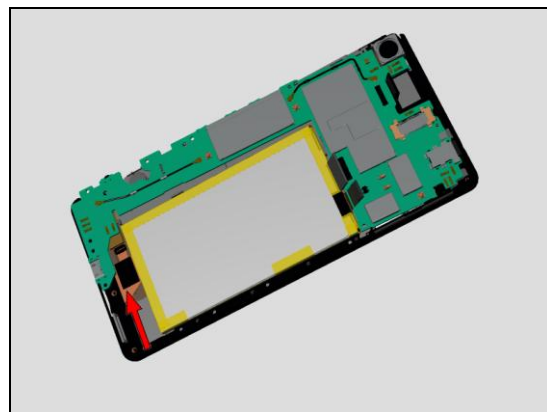
Insert the Front Opening Tool as shown position and pull upwards to unsnap the bottom hooks secures the Main PBA.



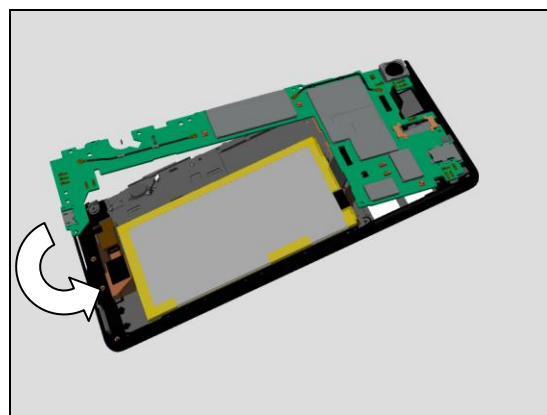
Do the same of the upper hooks as shown position.



Hold the bottom side of the Main PBA and gently push back and forth as shown direction to release the other snap hooks

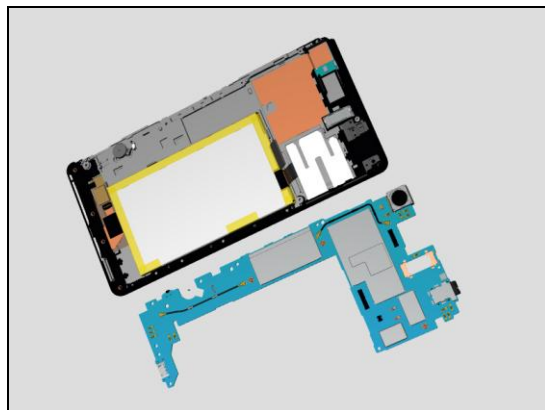


Raise the bottom side at approximate 30 degree and pull to remove the Main PBA.



Disassembly

Separate the Main PBA from Front Cover Assy.



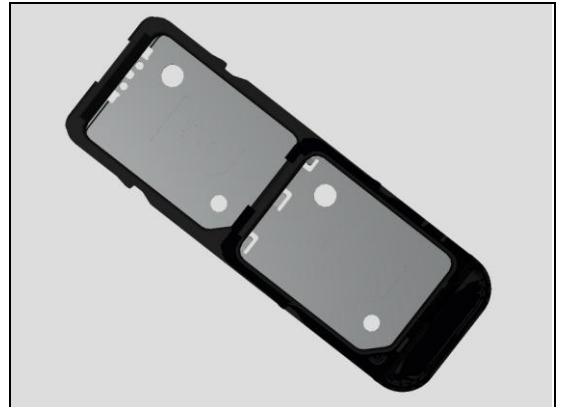
5 Replacement

5.1 SIM Tray

Follow the 4.1 Disassembly instructions!

Prepare a new SIM Tray.

Follow the 6.7 Reassembly instructions!



5.2 Back Cover Assy

Follow the 4.1 – 4.2 Disassembly instructions!

Prepare a new Back Cover Assy.

Follow the 6.6 – 6.7 Reassembly instructions!

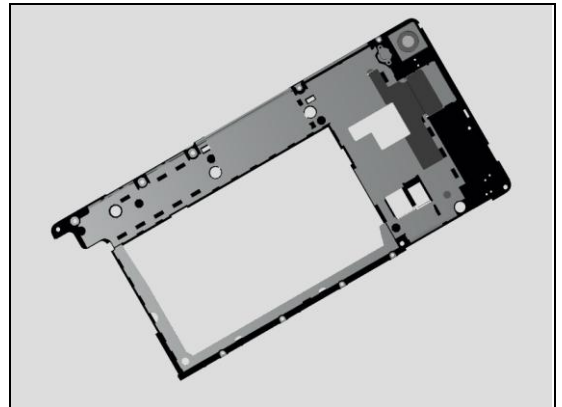


5.3 Rear Cover

Follow the 4.1 – 4.3 Disassembly instructions!

Prepare a new Rear Cover.

Follow the 6.5 – 6.7 Reassembly instructions!

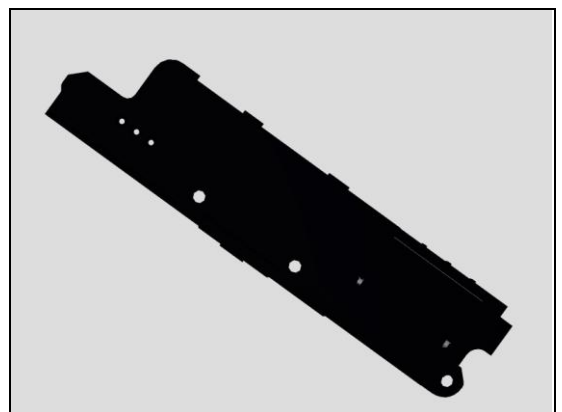


5.4 Antenna Module

Follow the 4.1 – 4.4 Disassembly instructions!

Prepare a new Antenna Module.

Follow the 6.4 – 6.7 Reassembly instructions!



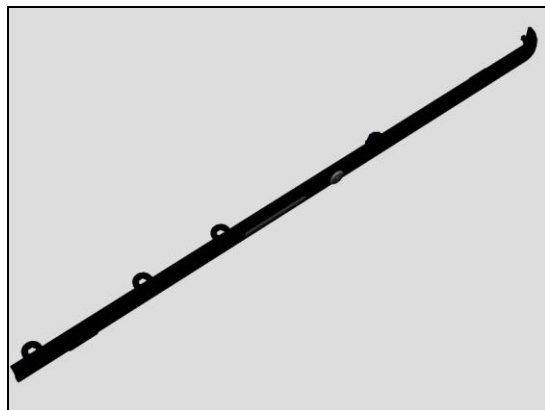
Replacement

5.5 Side Panel Assy Keys

Follow the 4.1 – 4.5 Disassembly instructions!

Prepare a new Side Panel Assy Keys.

Follow the 6.2 – 6.7 Reassembly instructions!



Replacement

5.6 2nd Mic Mesh

Follow the 4.1 – 4.6 Disassembly instructions!
Follow the 5.23 P-Sensor Rubber Removal instructions!
Carry out the replacement as described below.
Follow the 5.23 P-Sensor Rubber Installation instructions!
Follow the 6.1 – 6.7 Reassembly instructions!

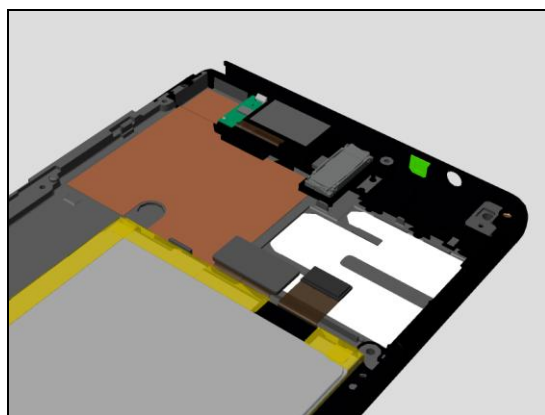
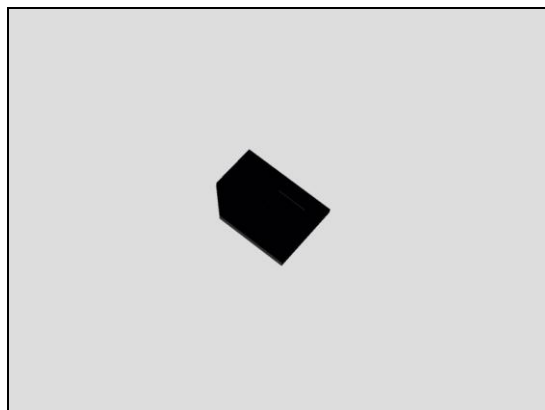
REMOVAL

Detach to remove it from the Front Cover Assy.

Make sure all remaining adhesive residues have been removed!

INSTALLATION

Attach a new 2nd Mic Mesh into its cavity and press along to make it securely attached.



Replacement

5.7 Adhesive Back Cover and Adhesive Main Camera of Back Cover

*Follow the 4.1 – 4.2 Disassembly instructions!
Carry out the replacement as described below.
Follow the 6.6 – 6.7 Reassembly instructions!*

REMOVAL

Detach to remove the Adhesive Back Cover and Adhesive Main Camera from Back Cover Assy with a pair of Plastic Tweezers.

Clean the edges of the Back Cover Assy carefully with alcohol before a new Adhesive Back Cover and Adhesive Main Camera of Back Cover are mounted.

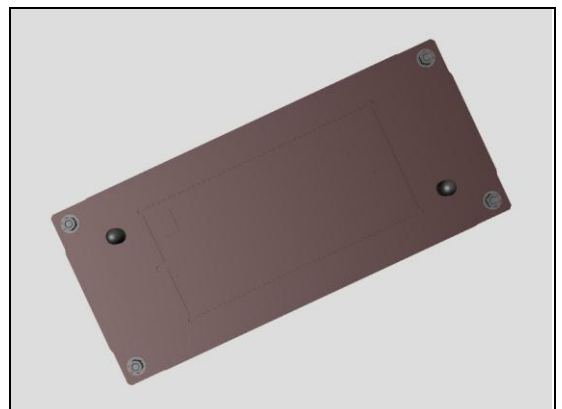
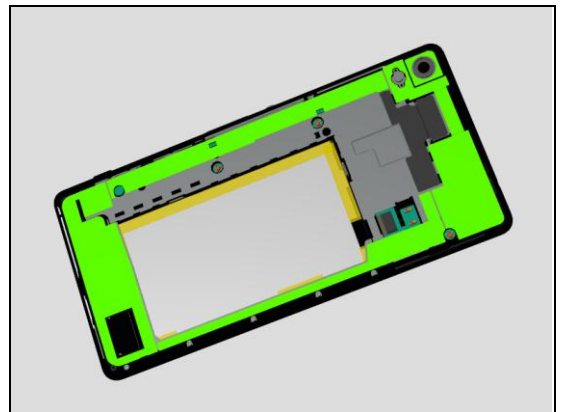
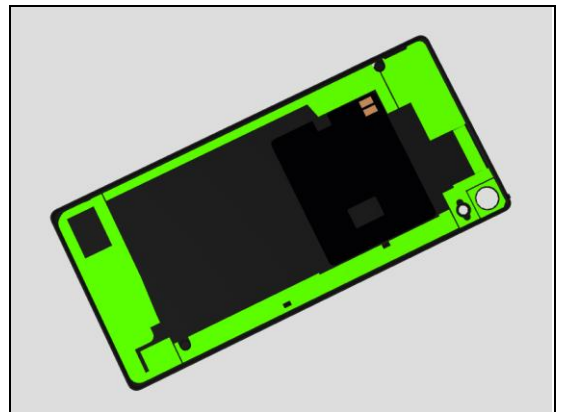
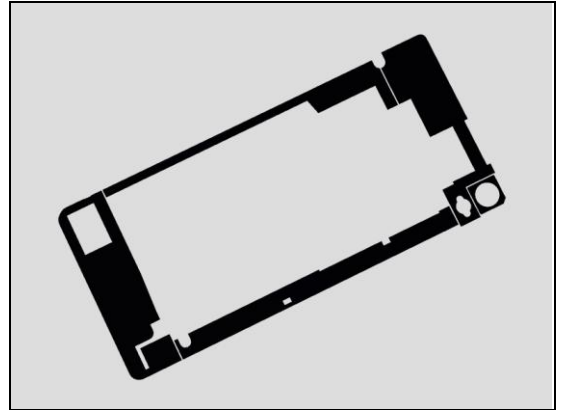
Scrap! Not to be reused!

Do not damage or scratch the Back Cover!

Do the same of the other side.

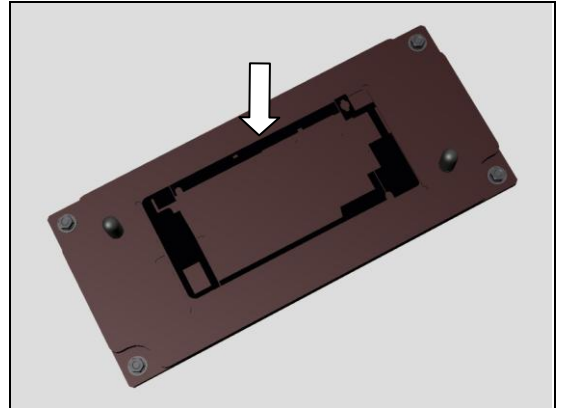
INSTALLATION

Prepare the Rear Panel Adhesive Tool.

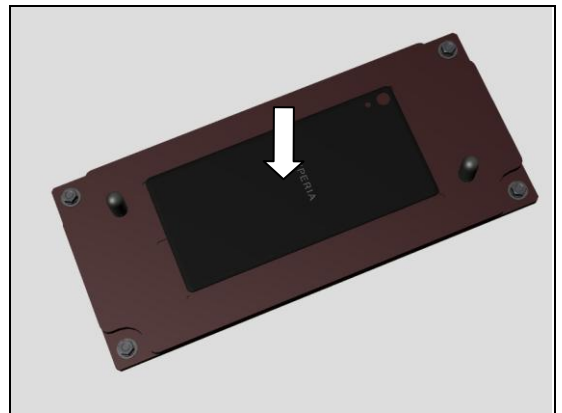


Replacement: Adhesive Back Cover and Adhesive Main Camera of Back Cover

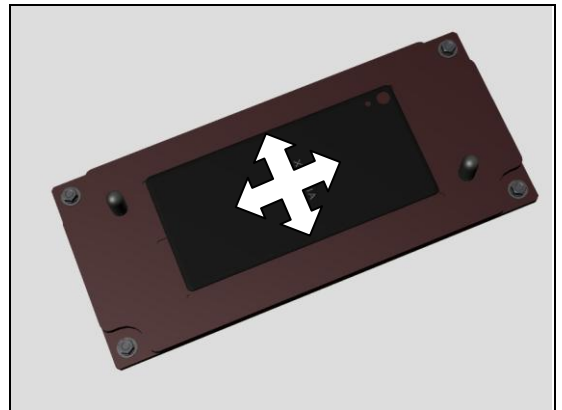
Place a new Adhesive Back Cover with protection film onto the Rear Panel Adhesive Tool.



Place the Cleaned Back Cover Assy above the Adhesive Back Cover with correct position.

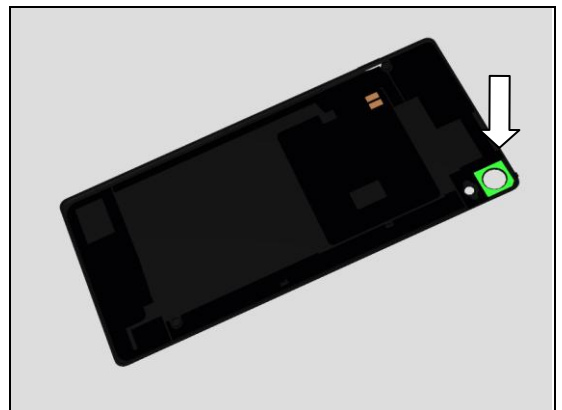


Press to secure the attachment.



Attach a new Adhesive Main Camera of Back Cover into the cavity on the Back Cover Assy as shown position in the picture.

Make sure the direction by using the guiding upper right corner!



Replacement

5.8 Adhesive Side Panel Assy Cap Side

Follow the 4.1 – 4.3. Disassembly instructions!
Follow the 5.27 Side Panel Assy Cap Removal instructions!
 Carry out the replacement as described below.
Follow the 5.27 Side Panel Assy Cap Installation instructions!
Follow the 6.5 – 6.7 Reassembly instructions!

REMOVAL

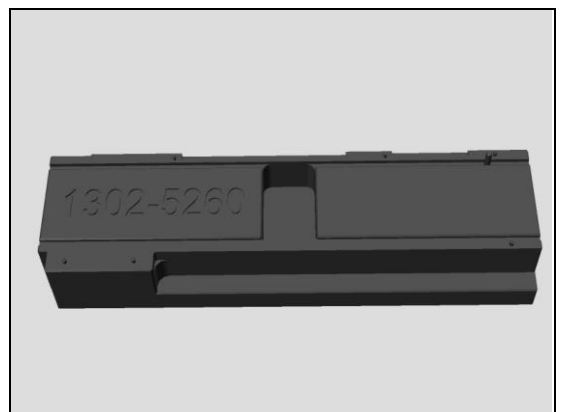
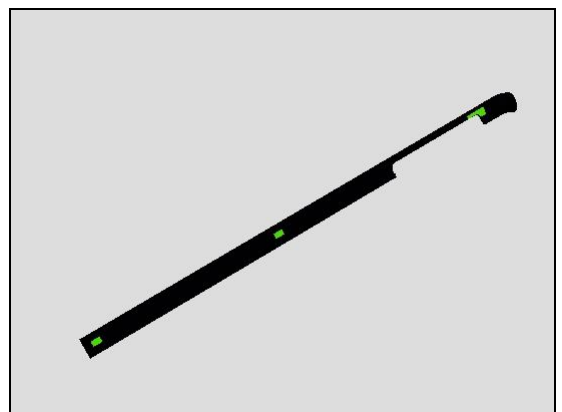
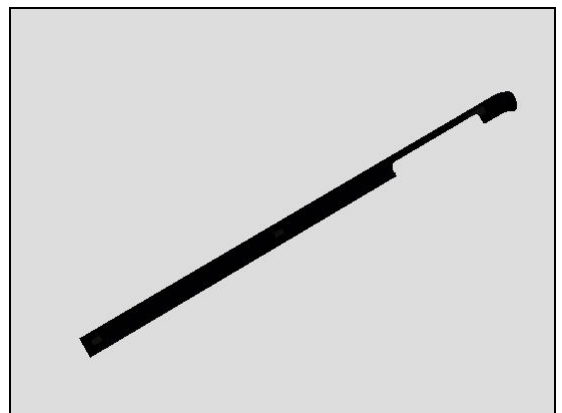
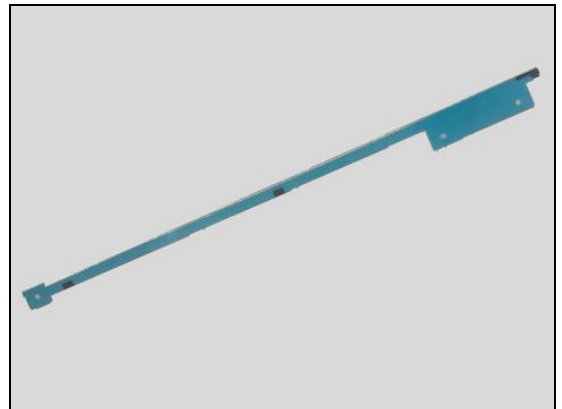
Inspect the Side Panel Assy Cap.

If Side Panel Assy Cap is deformed, scrap it!
Prepare a new Side Panel Assy Cap and go to chapter 5.26.

Detach to remove the Adhesive Side Panel Assy Cap Side.

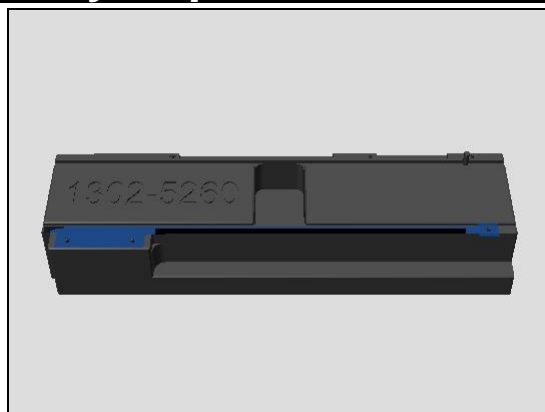
Scrap! Cannot reuse!

Prepare the Side Panel Adhesive Tool in place.

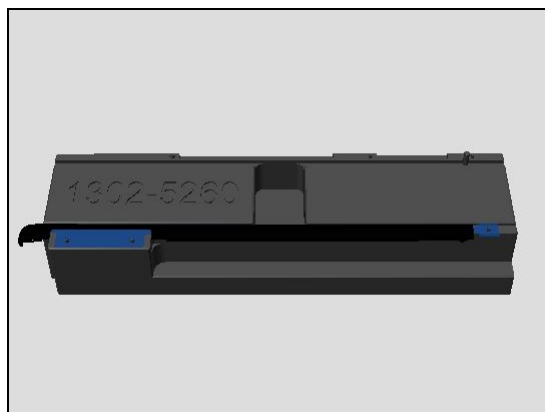


Replacement: Adhesive Side Panel Assy Cap Side

Put a new Adhesive Side Panel Assy Cap Side on the fixture using the gilding poles and holes as alignment.



Place the Side Panel Assy Cap on the Adhesive Side Panel Assy Cap Side and Press along to make it securely attached.



Replacement

5.9 Adhesive Side Panel Assy Keys Side

Follow the 4.1 – 4.5 Disassembly instructions!
Carry out the replacement as described below.
Follow the 6.3 – 6.7 Reassembly instructions!

REMOVAL

Inspect the Side Panel Assy Keys.

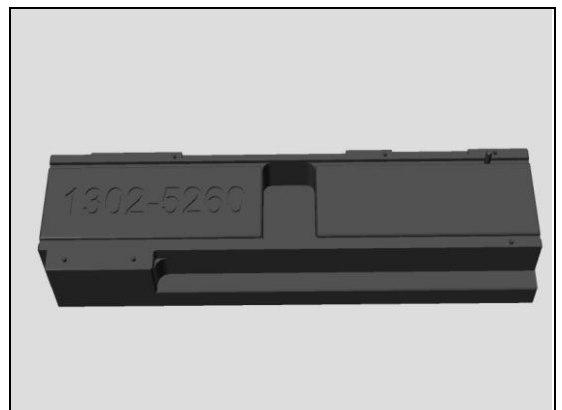
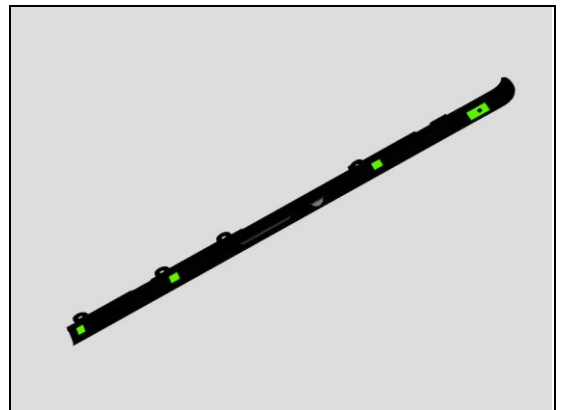
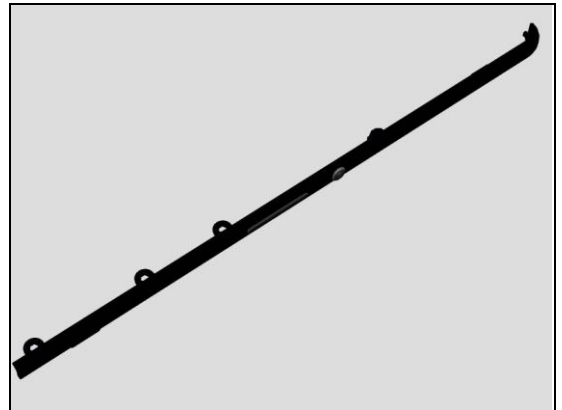
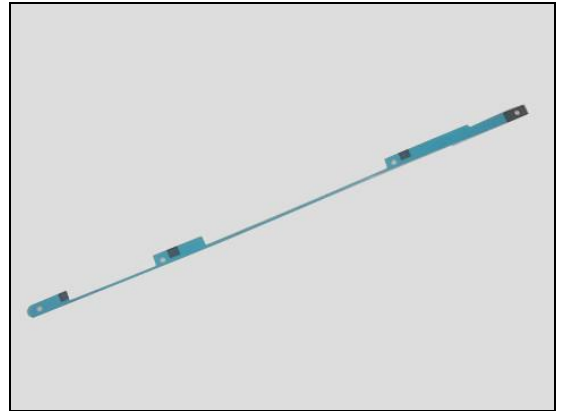
If Side Panel Assy Keys is deformed or key is damaged, scrap it!

Prepare a new Side Panel Assy Keys and go to chapter 6.3.

Scrap! Cannot reuse!

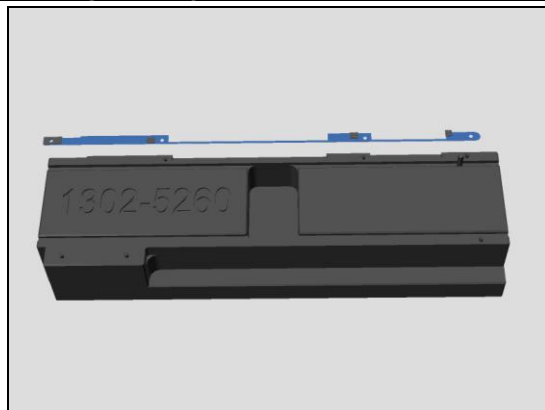
INSTALLATION

Prepare the Side Panel Adhesive Tool in place.

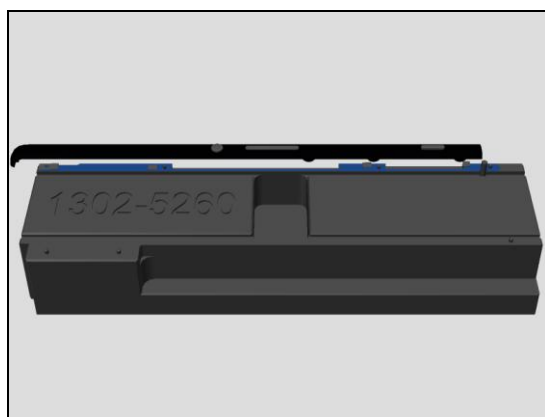


Replacement: Adhesive Side Panel Assy Keys Side

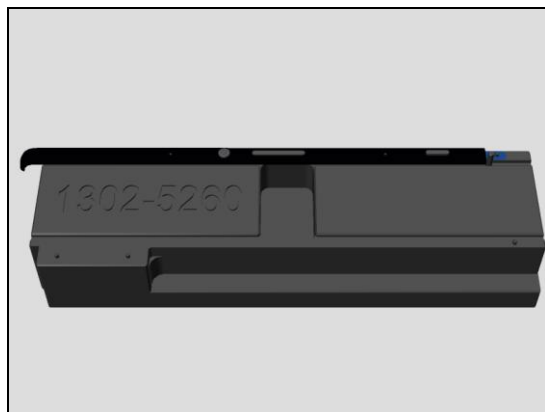
Put a new Adhesive Side Panel Assy Keys Side on the fixture using the gilding poles and holes as alignment.



Place the Side Panel Assy Keys above.

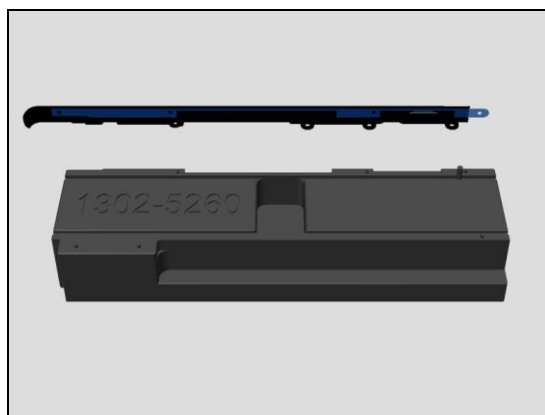


Press long the surface to make it securely attached.



Remove the Side Panel Key with the adhesive.

Remove the adhesive protection film before a new part is used!



Replacement

1304-4324 Rev 4

© Sony Mobile Communications AB – Company Internal

25(71)

5.10 Battery & Adhesive Embedded Battery

Follow the 4.1 – 4.6 Disassembly instructions!
 Carry out the replacement as described below.
Follow the 6.1 – 6.7 Reassembly instructions!

REMOVAL

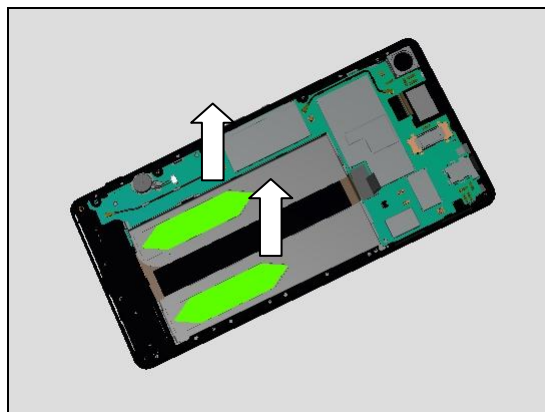
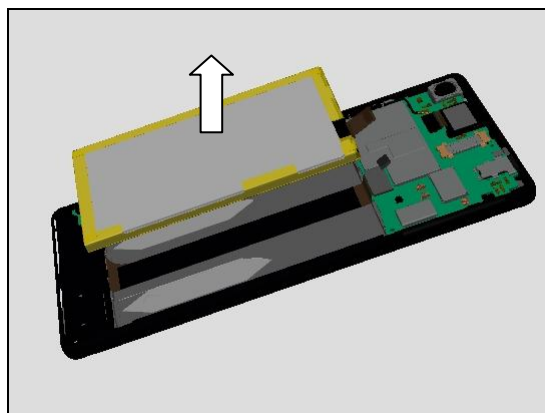
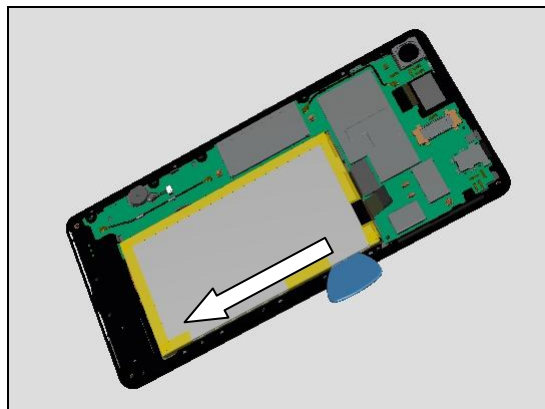
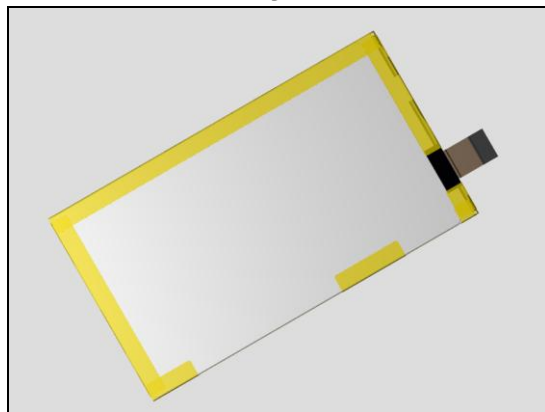
Insert Guitar Pick at shown position and slide to detach it from Adhesives underneath.

Lift up to remove the Battery as shown.

Note: Scrap! Cannot be reused!

Remove the old surplus of Adhesive Battery.

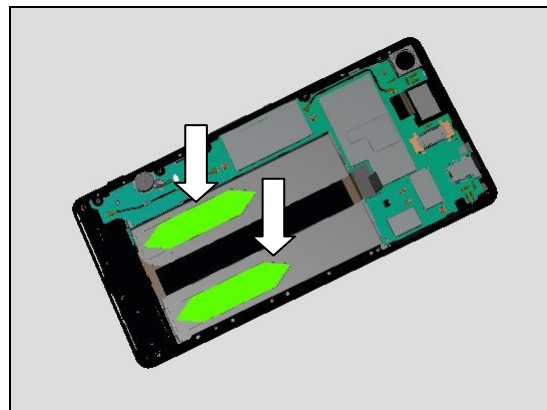
Note: Scrap! Cannot be reused.



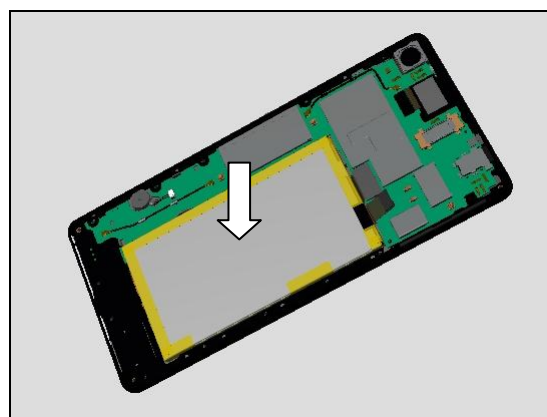
Replacement: Battery & Adhesive Embedded Battery

INSTALLATION

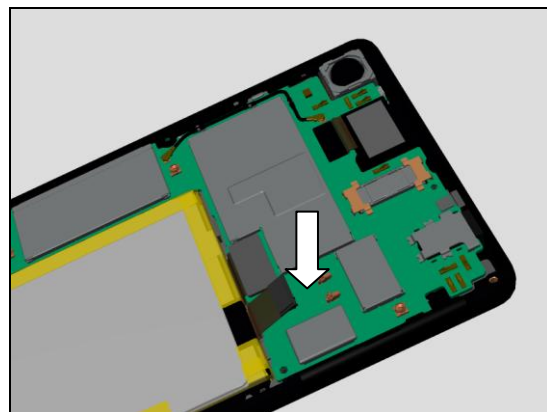
Attach two new Adhesive Embedded Battery with good alignment of the guiding lines as shown.



Assemble the new Battery at its correct position as shown.



Connect the Battery connector.



Replacement

5.11 Black Conductive Gasket

Follow the 4.1 - 4.3 Disassembly instructions!
Carry out the replacement as described below.
Follow the 6.5 - 6.7 Reassembly instructions!

REMOVAL

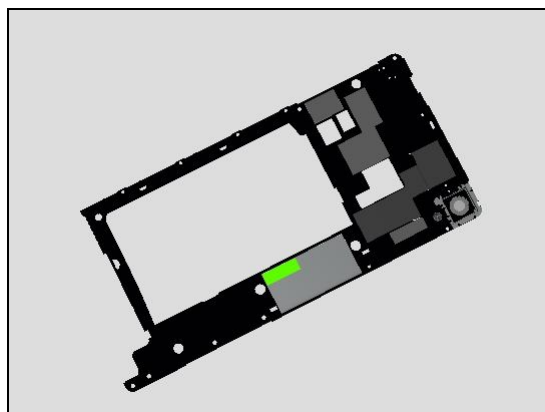
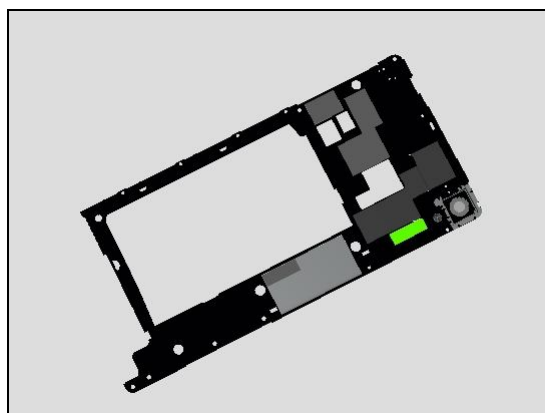
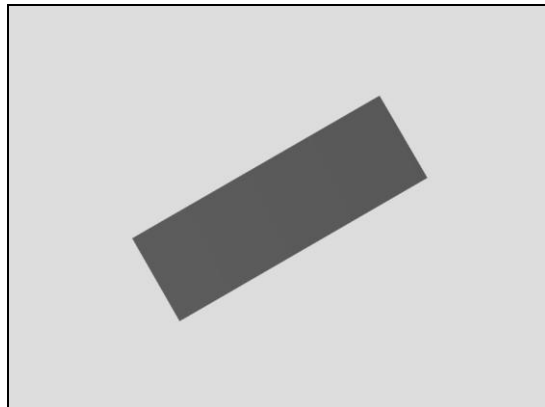
Detach to remove it from the Rear Cover.

Make sure all remaining adhesive residues have been removed!

INSTALLATION

Attach a new Black Conductive Gaskets accordingly to the guiding lines and press along to make it securely attached.

Do the same for the other one.



Replacement

5.12 Camera Front 16 MPixel CMOS & Adhesive Front Camera

Follow the 4.1 - 4.3 Disassembly instructions!

Carry out the Removal as described below.

Prepare a new Camera Front 16 MPixel CMOS and a new Adhesive Front Camera.

Carry out the Installation as described below.

Follow the 6.5 - 6.7 Reassembly instructions!

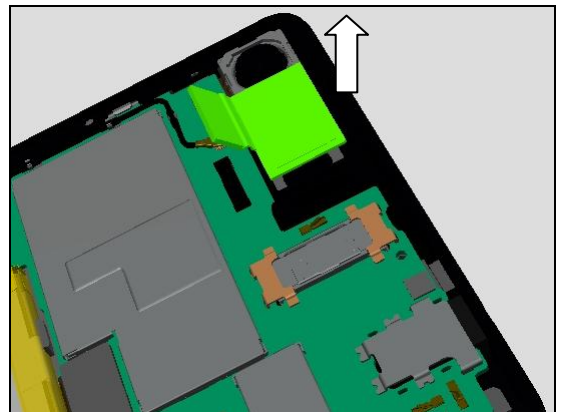
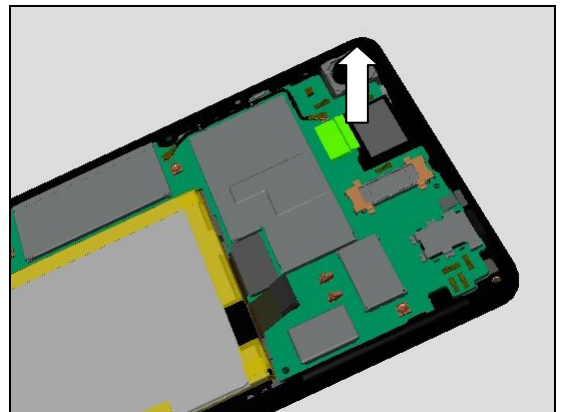
REMOVAL

Disconnect the BtB connector of Camera Front 16 MPixel CMOS.

Release the Camera Front 16 MPixel CMOS from Cavity gently.

Do not touch the lens!

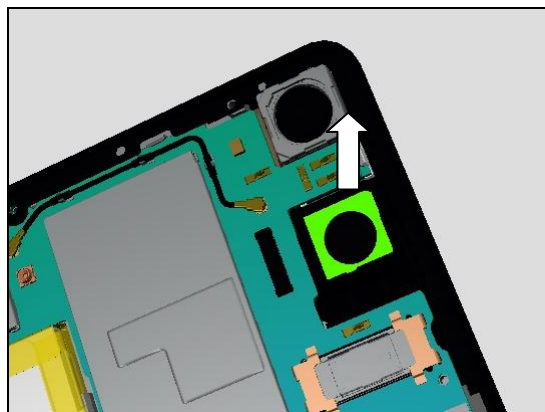
Remove the rubber from the old Camera Front 16 MPixel CMOS.



Replacement: Camera Front 16 MPixel CMOS

Detach to remove the Adhesive Front Camera.

Scrap! Cannot be reused!



INSTALLATION

Prepare a new Adhesive Front Camera in place.



Attach a new Adhesive Front Camera into the cavity and press along to make it securely attached.

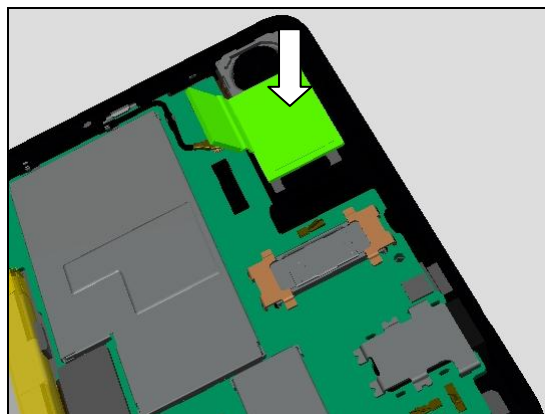


Assemble the new Camera Front 16 MPixel CMOS with the good condition old rubber.



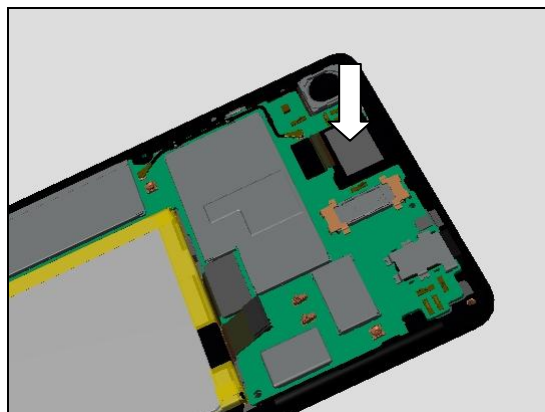
Replacement: Camera Front 16 MPixel CMOS

Insert the Camera head into the cavity with good alignment of the Rubber.

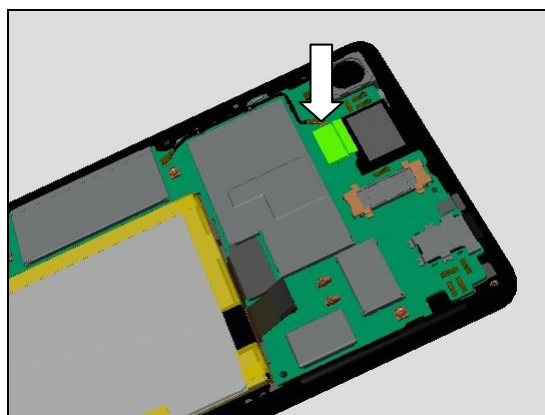


Press along the back side of Camera head gently and inspect if the surface is flat.

If not, disassemble and reassemble again.



Press to connect the BtB connector of Camera.



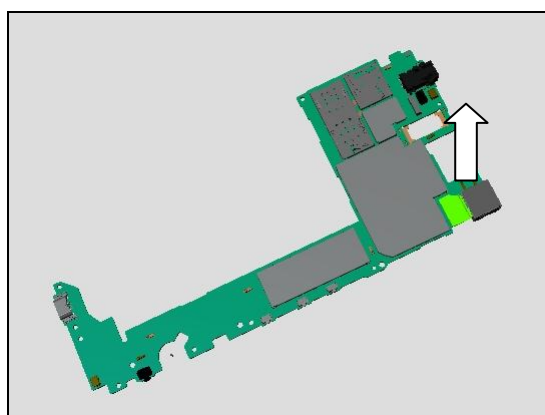
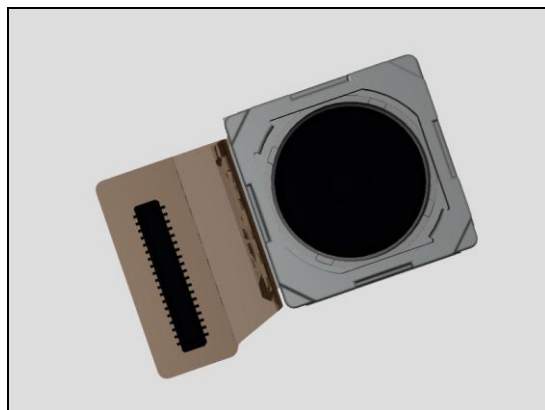
Replacement

5.13 Camera Main 21 MPixel CMOS

Follow the 4.1 - 4.6 Disassembly instructions!
 Carry out the replacement as described below.
Follow the 6.1 - 6.7 Reassembly instructions!

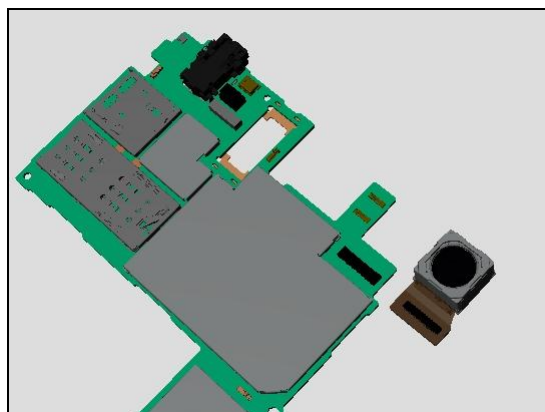
REMOVAL

Disconnect the BtB connector and remove the Camera Main 21 MPixel CMOS.

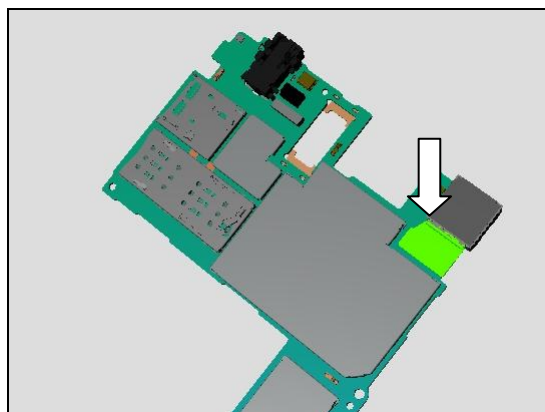


INSTALLATION

Prepare a new Camera Main 21 MPixel CMOS in place.



Press to connect the BtB connector of Camera Main 21 MPixel CMOS.



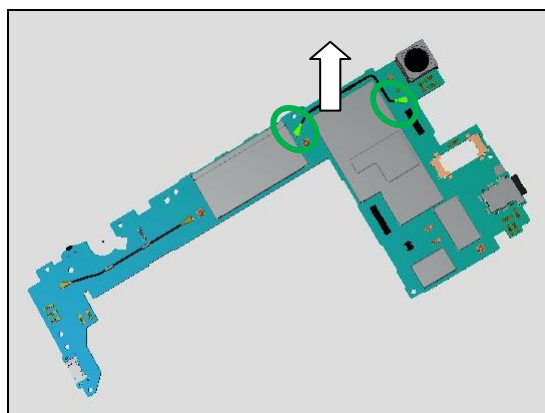
Replacement

5.14 Coaxial Cable Black

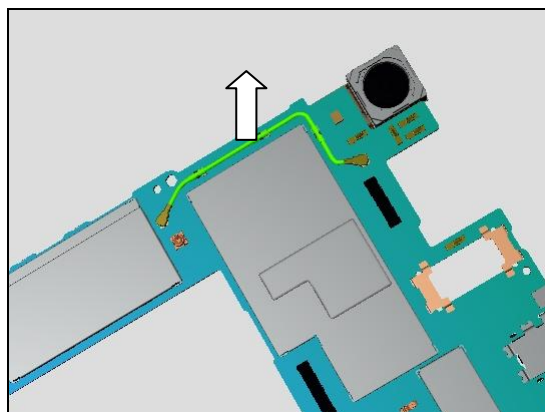
Follow the 4.1 - 4.6 Disassembly instructions!
Carry out the replacement as described below.
Follow the 6.1 - 6.7 Reassembly instructions!

REMOVAL

Disconnect two RF connectors

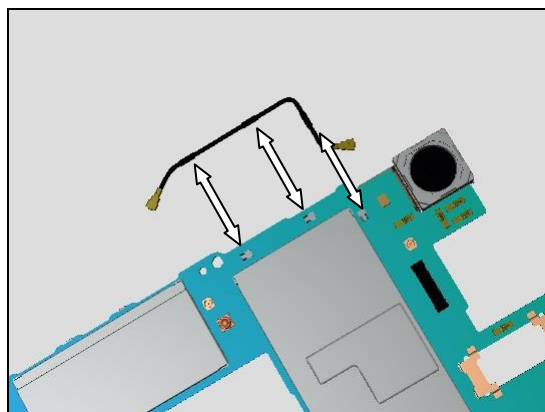


Pull to unsnap and remove the Coaxial Cable Black from the three clips holding it.



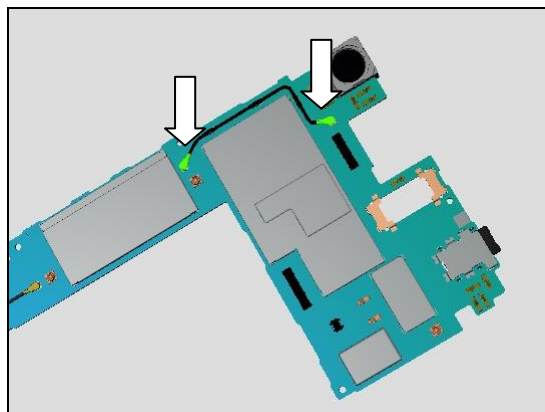
INSTALLATION

Prepare a new Coaxial Cable Black in place.

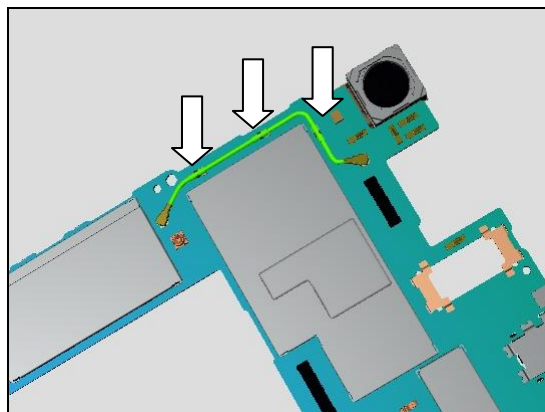


Replacement: Coaxial Cable Black

Connect the two coax connectors of Coaxial Cable Black carefully.



Insert the Cable to the three clips to fix its position.



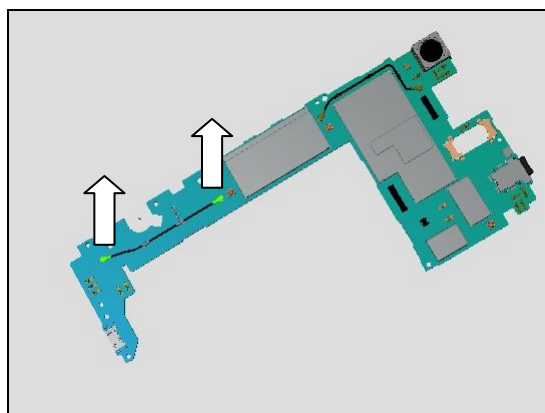
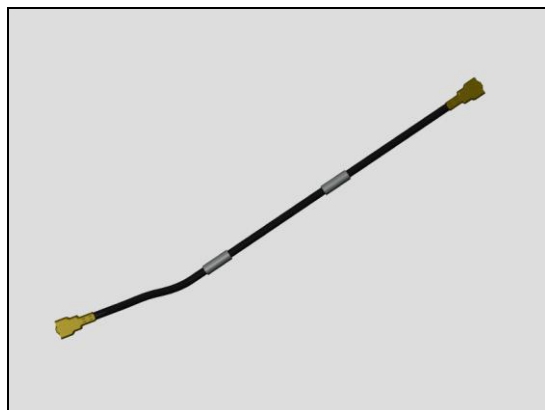
Replacement

5.15 Coaxial Cable White

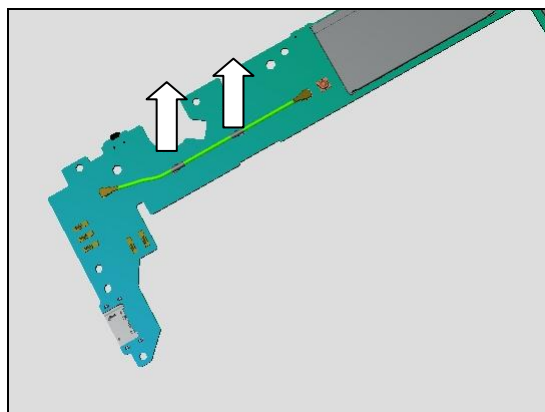
Follow the 4.1 - 4.6 Disassembly instructions!
Carry out the replacement as described below.
Follow the 6.1 - 6.7 Reassembly instructions!

REMOVAL

Disconnect two RF coax connectors.

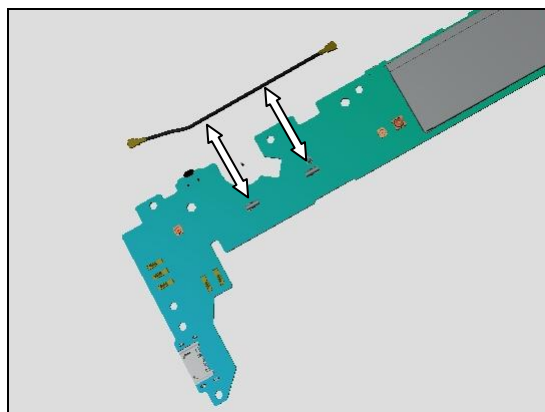


Pull to unsnap and remove the Coaxial Cable White from the two clips holding it.



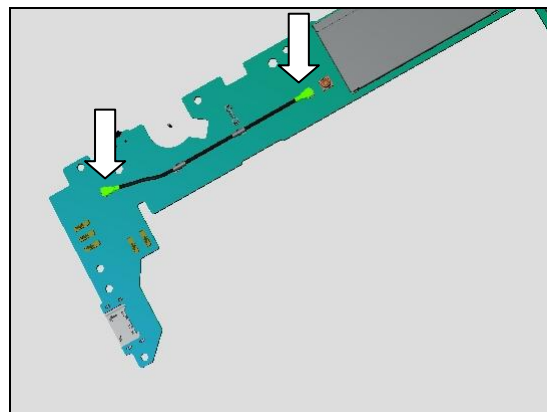
INSTALLATION

Prepare a new Coaxial Cable White in place.

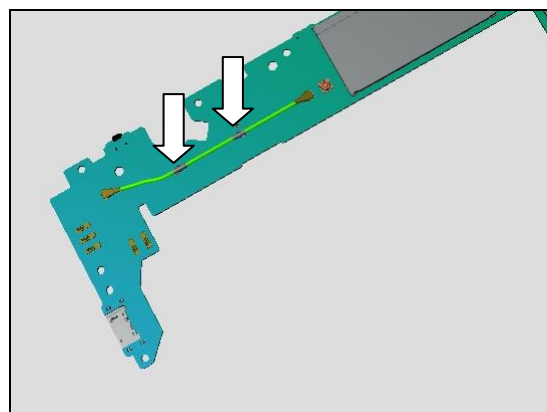


Replacement: Coaxial Cable White

Connect the two coax connectors of Coaxial Cable White carefully.



Insert the Cable to the two clips to fix its position.



Replacement

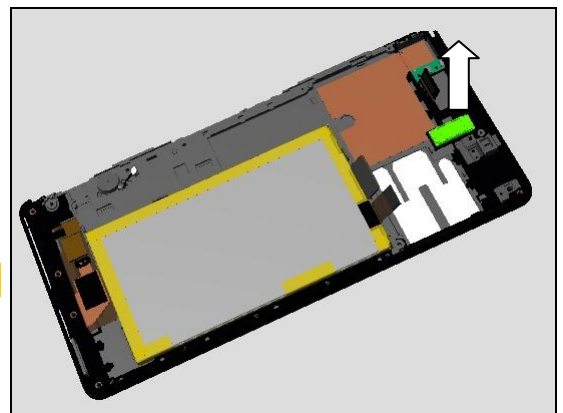
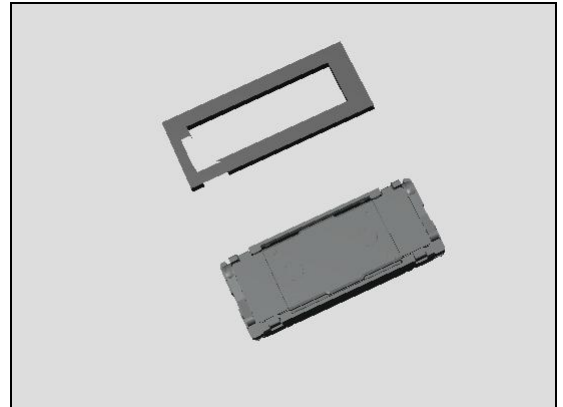
5.16 Ear speaker & Adhesive Ear speaker

Follow the 4.1 - 4.6 Disassembly instructions!
 Carry out the replacement as described below.
Follow the 6.1 - 6.7 Reassembly instructions!

REMOVAL

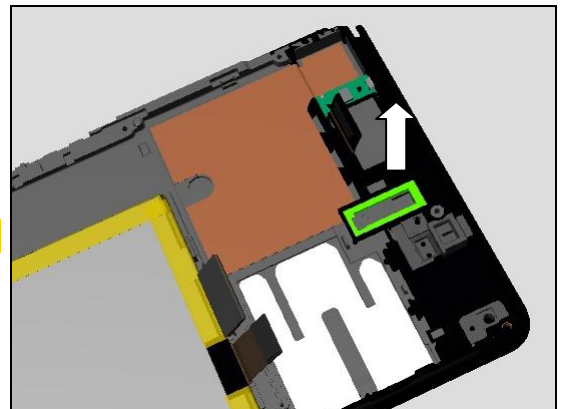
Remove the Ear speaker by using the Front Opening Tool.

Scrap! Not to be reused!



Remove the Adhesive Ear speaker and all the residues.

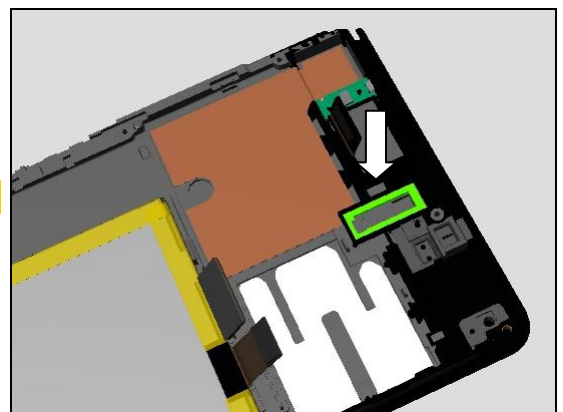
Scrap! Not to be reused!



INSTALLATION

Clean the cavity carefully before Installation!

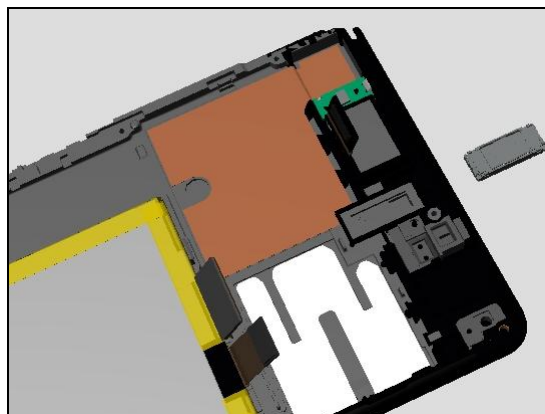
Attach a new Adhesive Ear speaker into the cavity and press around to secure its attachment.



Replacement: Ear speaker & Adhesive Ear speaker

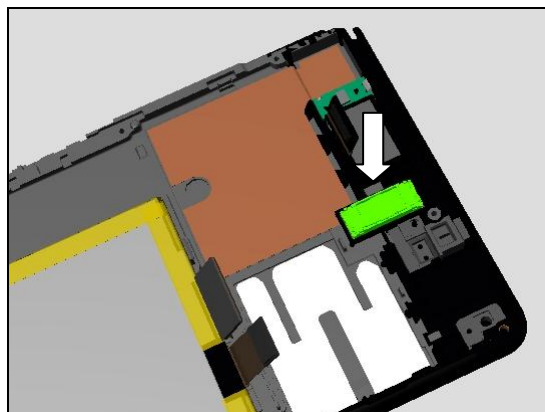
Place a new Ear speaker into the cavity.

Make sure the direction of pins!



Press along to secure the attachment.

Do not touch the pins of the Ears speaker!



Replacement

5.17 Front Cover Assy

Follow the 4.1 - 4.6 Disassembly instructions!

Follow the 5.12, 5.18, 5.22 5.28, 5.30 Removal instructions!

Carry out the replacement as described below.

Follow the 5.12, 5.16, 5.18, 5.22 5.28, 5.30 Installation instructions!

Follow the 6.1 - 6.7 Reassembly instructions!

When replacing Front Cover Assy, Calibration for Proximity Sensor and Ambient Light Sensor must be done following Sony Mobile Repair Application 1289-2983



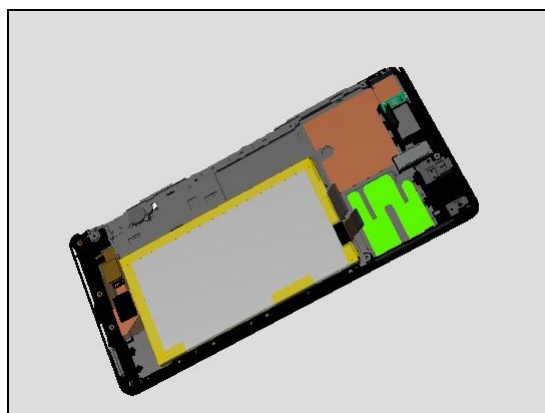
Replacement

5.18 Label Tray

Follow the 4.1 - 4.6 Disassembly instructions!
Carry out the replacement as described below.
Follow the 5.30 Installation instructions!
Follow the 6.1 - 6.7 Reassembly instructions!

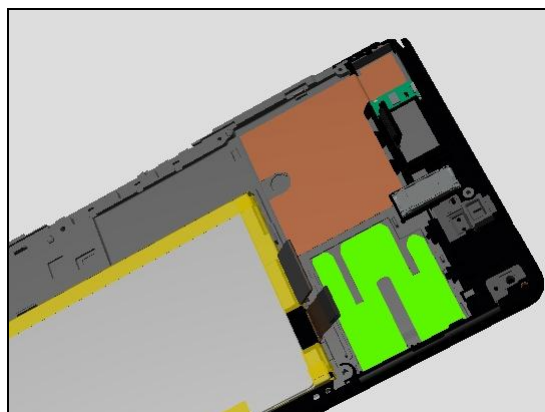
REMOVAL

Remove the Label Tray from the Unit.



INSTALLATION

Place a new Label Tray in place with correct direction.



Replacement

5.19 Liquid Indicator

Follow the 4.1 - 4.3 Disassembly instructions!
Carry out the Replacement as described below.
Follow the 6.5 - 6.7 Reassembly instructions!

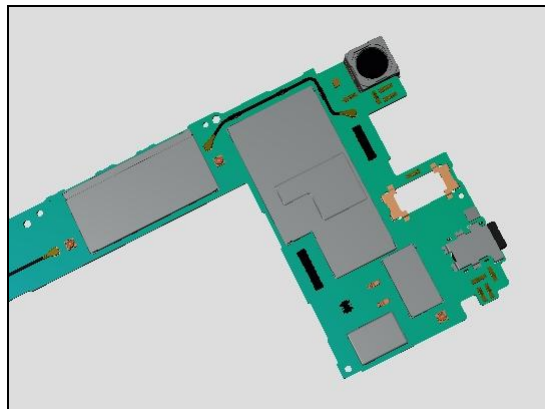
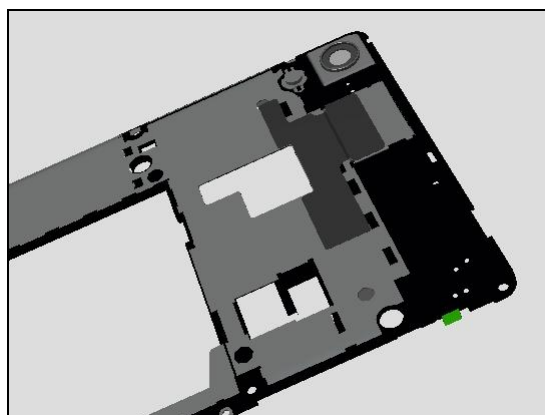
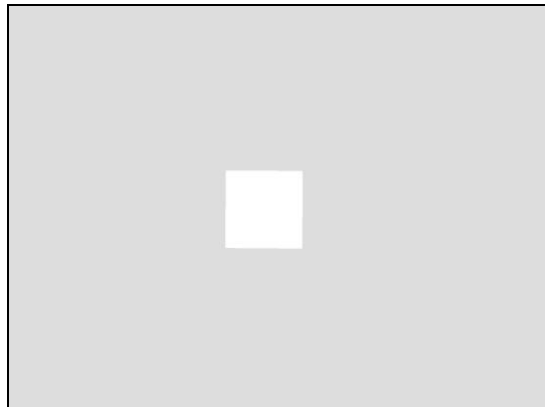
REMOVAL

Remove the Liquid Indicator.

INSTALLATION

Place a new Liquid Indicator on its frame of Rear Cover and press to make it securely attached.

Do the same for the other Liquid Indicator.



Replacement

5.20 Main Camera Adhesive

Follow the 4.1 - 4.3 Disassembly instructions!
Carry out the replacement as described below.
Follow the 6.5 - 6.7 Reassembly instructions!

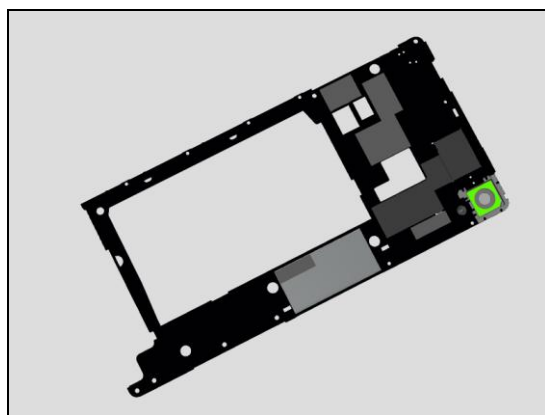
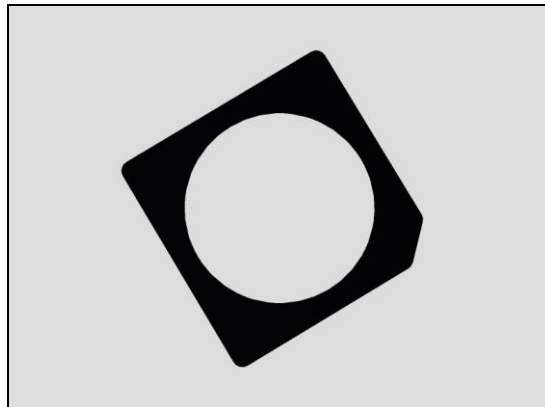
REMOVAL

Detach to remove it from the Rear Cover.

Make sure all remaining adhesive residues have been removed!

INSTALLATION

Attach a new Main Camera Adhesive into the cavity of the Rear Cover and press along to make it securely attached.



Replacement

5.21 Main Mic Mesh

Follow the 4.1 - 4.6 Disassembly instructions!
Carry out the Replacement as described below.
Follow the 6.1 - 6.7 Reassembly instructions!

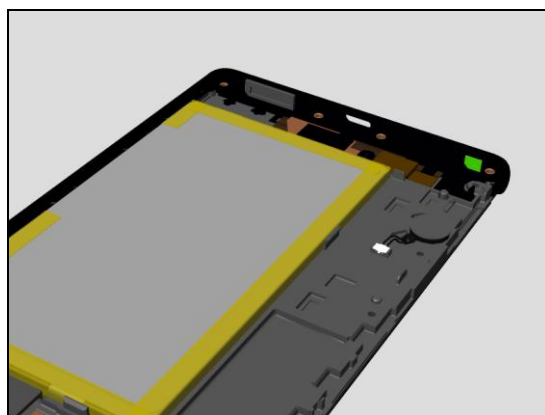
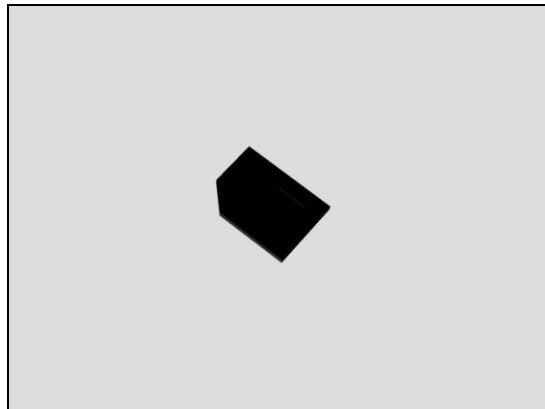
REMOVAL

Detach to remove it from the Front Cover Assy.

Make sure all remaining adhesive residues have been removed!

INSTALLATION

Attach a new Main Mic Mesh into its cavity and press along to make it securely attached.



Replacement

5.22 PBA Flash LED and Adhesive PBA Flash LED

Follow the 4.1 - 4.6 Disassembly instructions!
 Carry out the replacement as described below.
Follow the 6.1 - 6.7 Reassembly instructions!

REMOVAL

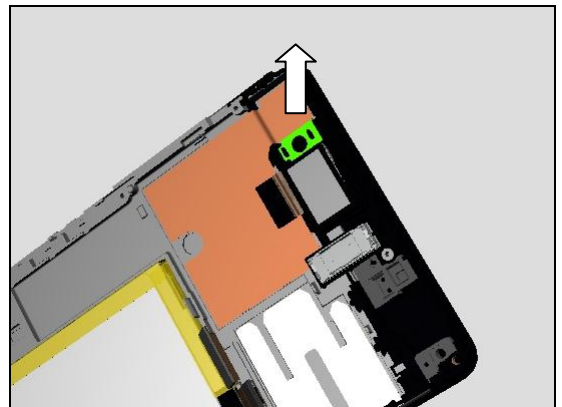
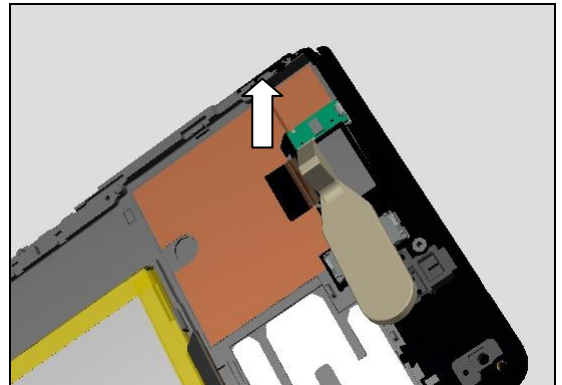
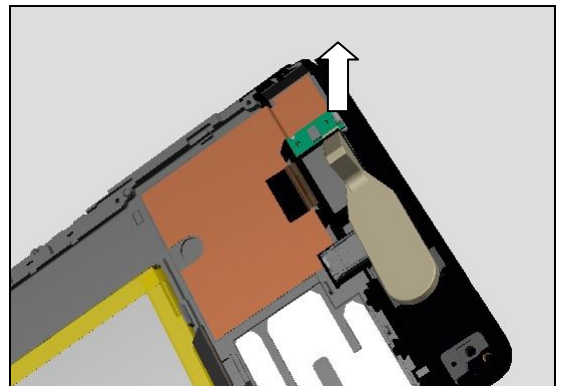
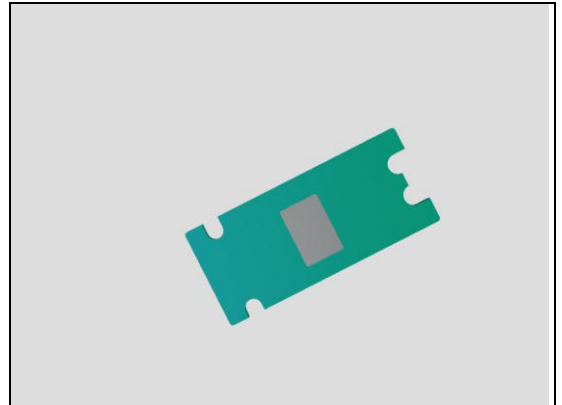
Insert the Front Opening Tool from corner.

Slide gently to detach the PBA Flash LED from adhesive underneath.

Do not damage the PBA Flash LED!

Peel off the Adhesive PBA Flash LED and remove all the residues remains.

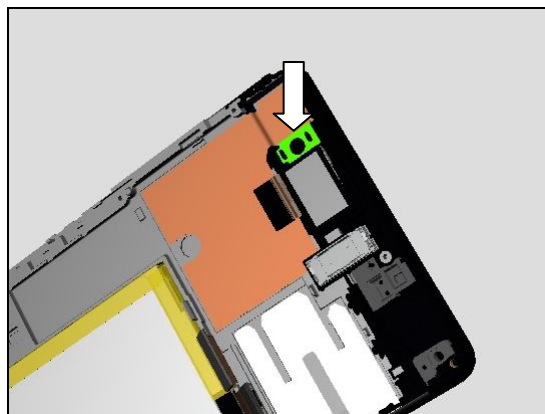
Scrap. Cannot reuse!



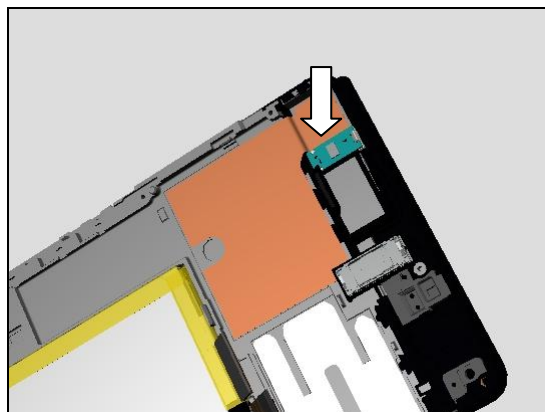
Replacement: PBA Flash LED and Adhesive PBA Flash LED

INSTALLATION

Attach a new Adhesive PBA Flash LED and press to make sure its attachment.



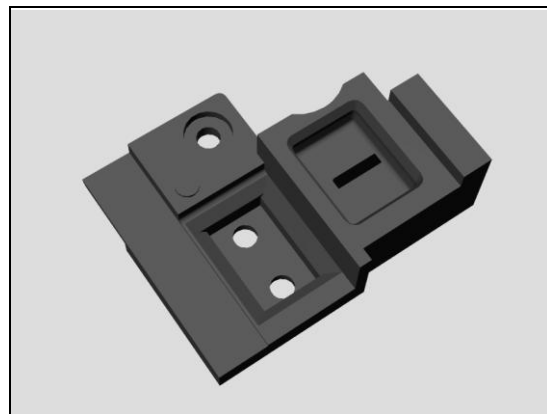
Put a new PBA Flash LED at proper position and press to snap the hook on the top.
Press long to secure its attachment.



Replacement

5.23 P-Sensor Rubber

Follow the 4.1 - 4.6 Disassembly instructions!
Carry out the replacement as described below.
Follow the 6.1 - 6.7 Reassembly instructions!

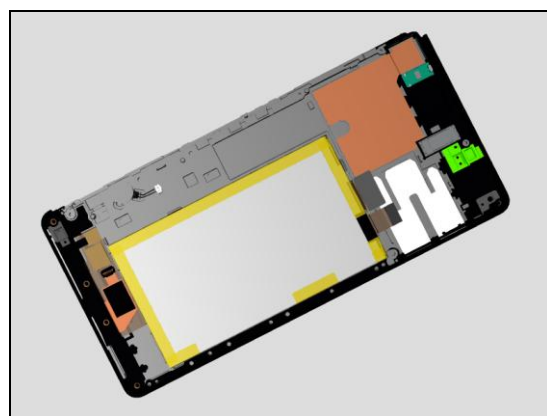


REMOVAL

Remove it gently from Front Cover Assy.

INSTALLATION

Place a new P-Sensor Rubber into the cavity and press to snap it properly as shown.



Replacement

5.24 Rear Cover Adhesive 1

Follow the 4.1 - 4.3 Disassembly instructions!
Carry out the replacement as described below.
Follow the 6.5 - 6.7 Reassembly instructions!

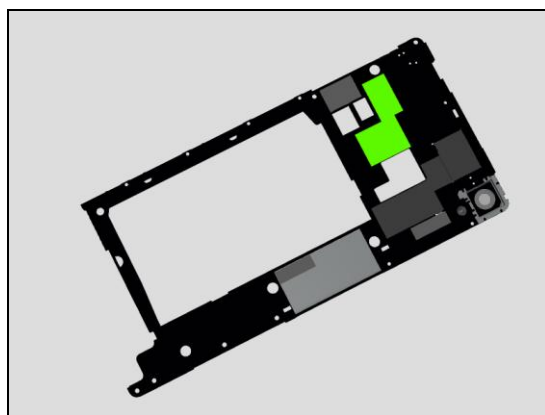
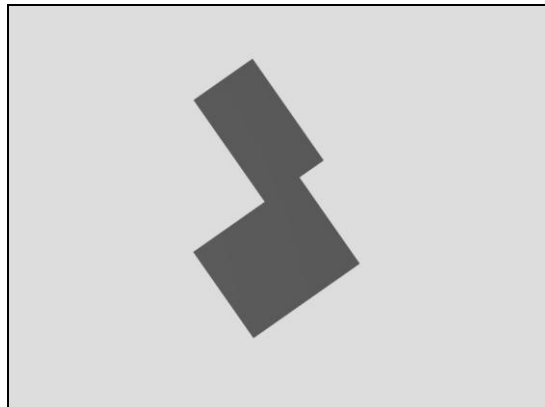
REMOVAL

Detach to remove it from the Rear Cover.

Make sure all remaining adhesive residues have been removed!

INSTALLATION

Attach a new Rear Cover Adhesive 1 into its cavity and press along to make it securely attached.



Replacement

5.25 Rear Cover Adhesive 2

Follow the 4.1 - 4.3 Disassembly instructions!
Carry out the replacement as described below.
Follow the 6.5 - 6.7 Reassembly instructions!

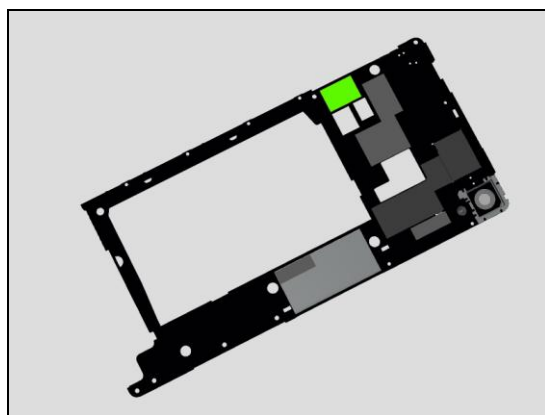
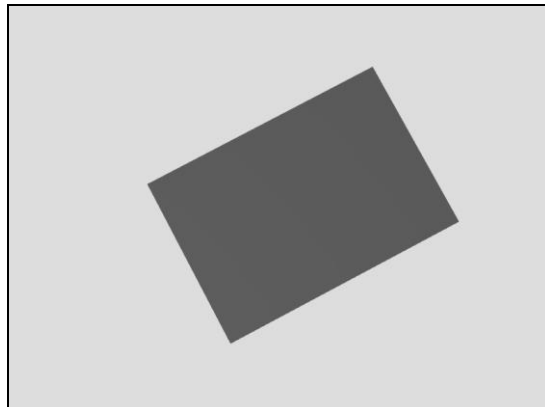
REMOVAL

Detach to remove it from Rear Cover.

Make sure all remaining adhesive residues have been removed!

INSTALLATION

Attach a new Rear Cover Adhesive 2 into its cavity and press along to make it securely attached.



Replacement

5.26 Rear cover Thermal Sheet

Follow the 4.1 - 4.3 Disassembly instructions!
Carry out the replacement as described below.
Follow the 6.5 - 6.7 Reassembly instructions!

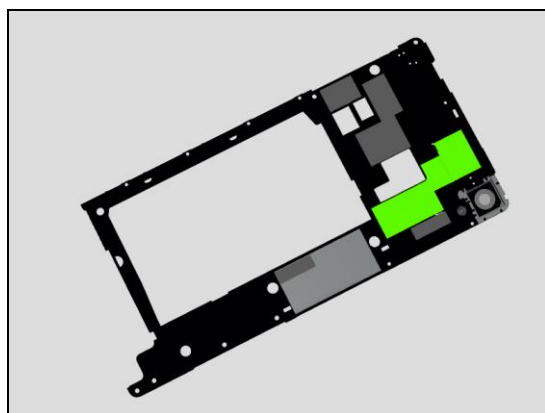
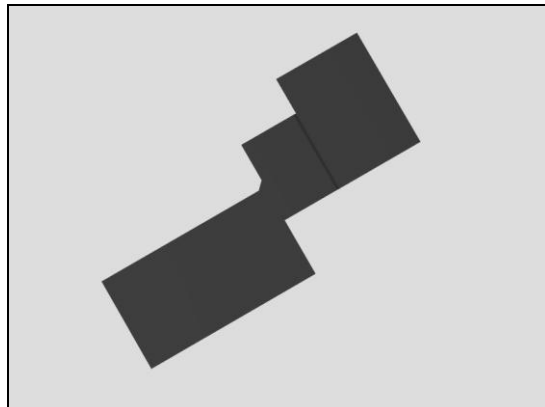
REMOVAL

Detach to remove it from Rear Cover.

Make sure all remaining adhesive residues have been removed!

INSTALLATION

Attach a new Rear cover Thermal Sheet into its cavity and press along to make it securely attached.



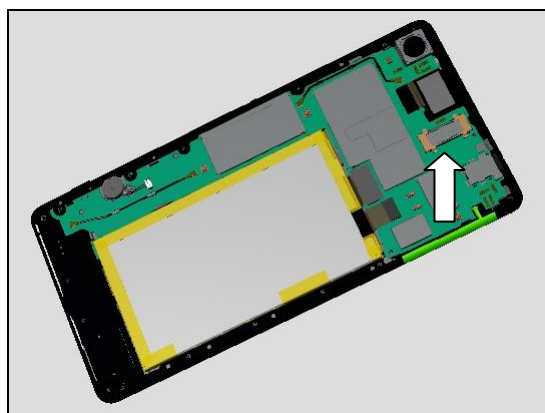
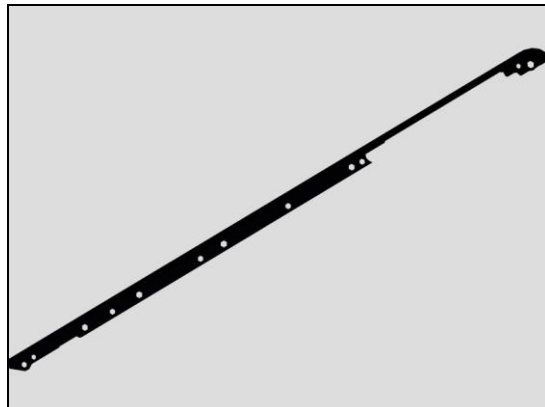
Replacement

5.27 Side Panel Assy Cap

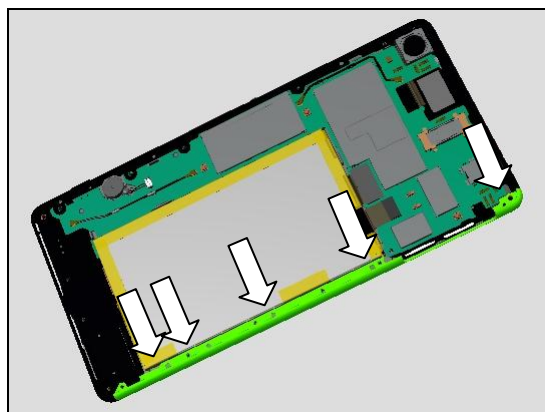
Follow the 4.1 - 4.3 Disassembly instructions!
 Carry out the replacement as described below.
Follow the 6.5 - 6.7 Reassembly instructions!

REMOVAL

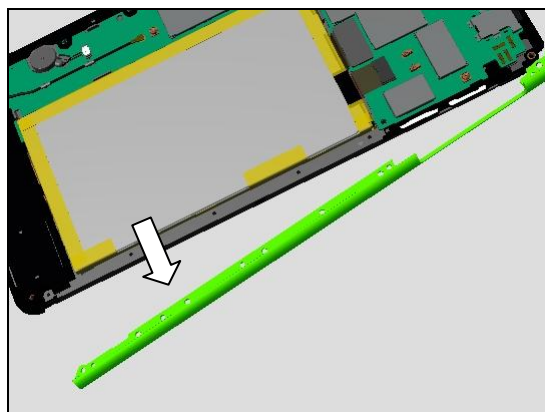
Remove the SIM Cap as shown direction.



Insert the tweezers head into the holes and push to release the Side Panel Assy Cap as Arrows shown.



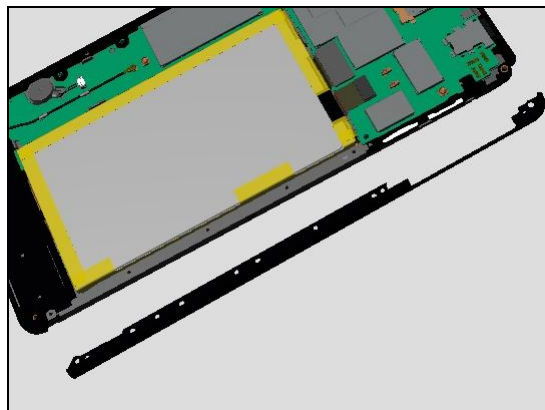
Separate the Side Panel Assy Keys.



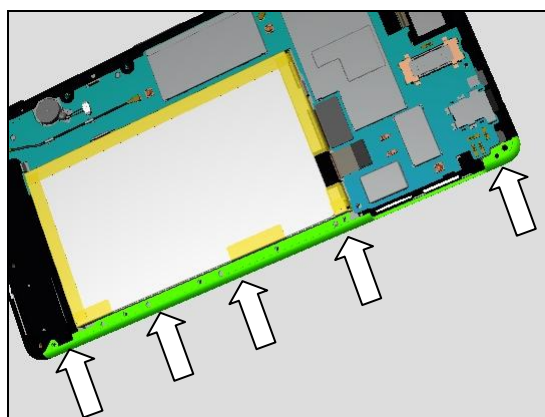
Replacement: Side Panel Assy Cap

INSTALLATION

Prepare a new Side Panel Assy Cap.

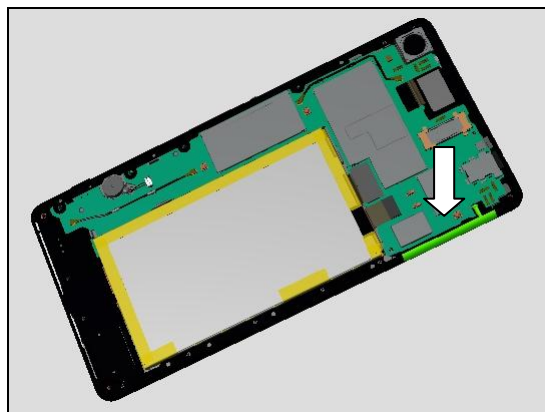


Snap the Side Panel Assy Cap on the side of the Unit by using the six screw nut holes as guiding holes from lower left to upper right corner as shown.

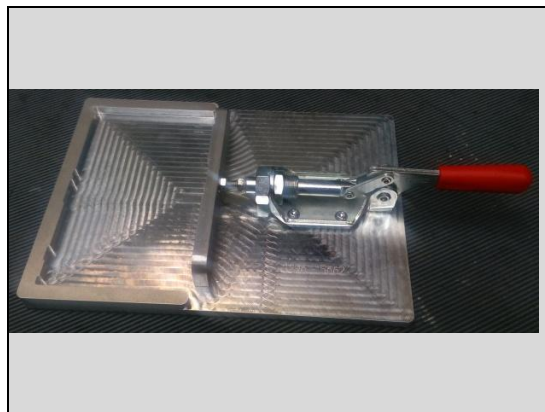


Place the SIM Cap back by inserting the head into the hole.

Close the SIM Cap.



Prepare the Side Panel Press Fixture in place



Replacement: Side Panel Assy Cap

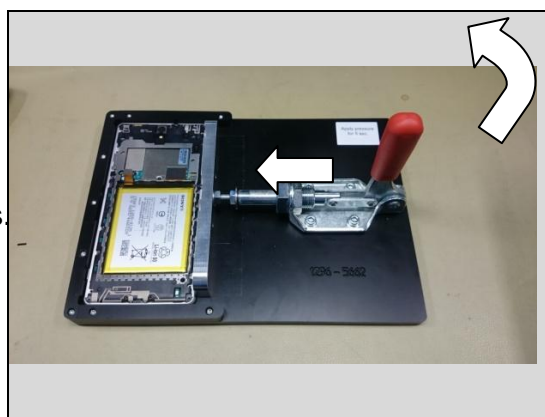
Put the Unit into Side Panel Press Fixture

Make sure the SIM Cap is closed before action!

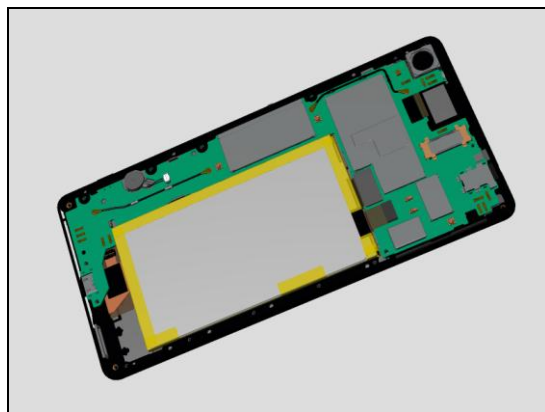
The unit should be placed with LCD down; the orientation of the unit does not matter.



Lift the handle and keep 5 seconds to press both Side Panels.



Remove the Unit from the fixture.



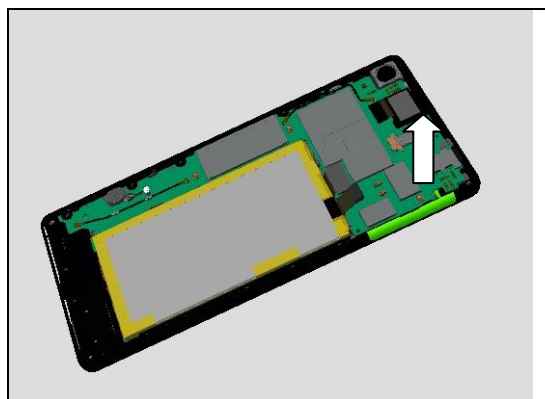
Replacement

5.28 SIM Cap

Follow the 4.1 - 4.3 Disassembly instructions!
 Carry out the replacement as described below.
 Follow the 6.5 - 6.7 Reassembly instructions!

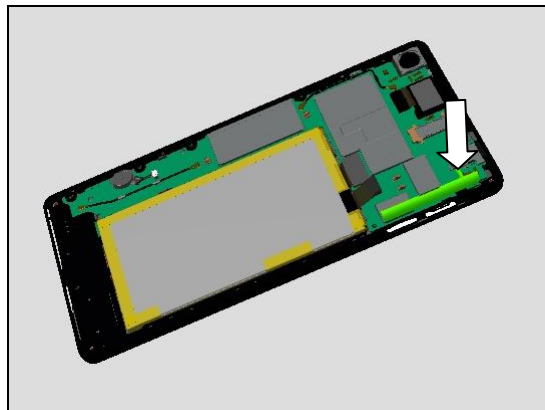
REMOVAL

Remove the SIM Cap by pulling as shown direction.

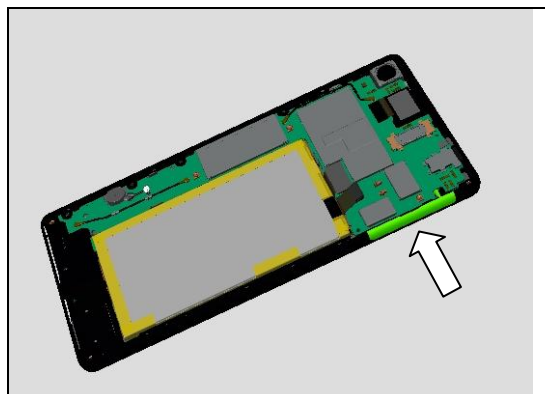


INSTALLATION

Insert a new SIM Cap into its hole as shown angle in picture.



Close the SIM Cap.



Replacement

5.29 Speaker Mesh Deco

Follow the 4.1 - 4.6 Disassembly instructions!
Carry out the replacement as described below.
Follow the 6.1 - 6.7 Reassembly instructions!

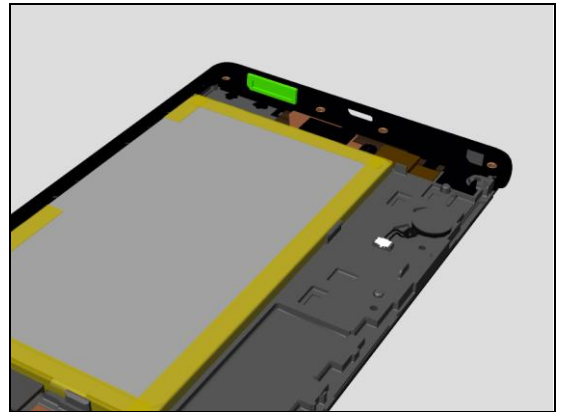
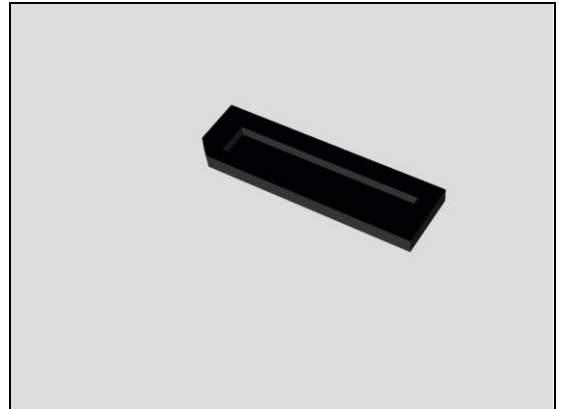
REMOVAL

Detach to remove it from the Front Cover Assy.

Make sure all remaining adhesive residues have been removed!

INSTALLATION

Attach a new Speaker Mesh Deco into its cavity and press along to make it securely attached.



Replacement

5.30 Vibrator & Adhesive Vibrator

Follow the 4.1 - 4.3 Disassembly instructions!
 Carry out the replacement as described below.
Follow the 6.5 - 6.7 Reassembly instructions!

REMOVAL

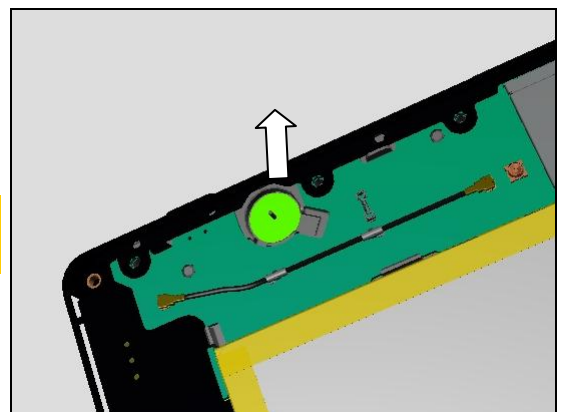
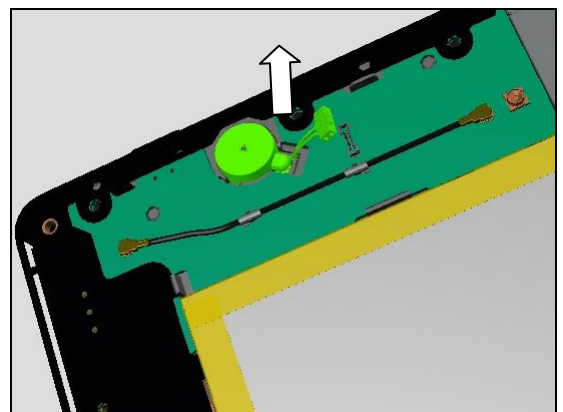
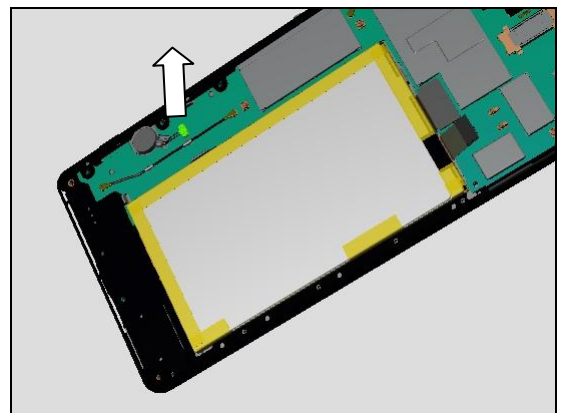
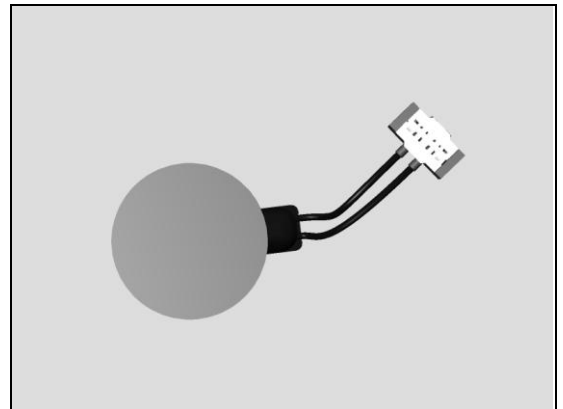
Disconnect the Vibrator connector by using the Front Opening Tool.

Insert the Front Opening Tool underneath the Vibrator and pull upwards to release it.

Detach to remove the Adhesive Vibrator.

Make sure no residue remains!

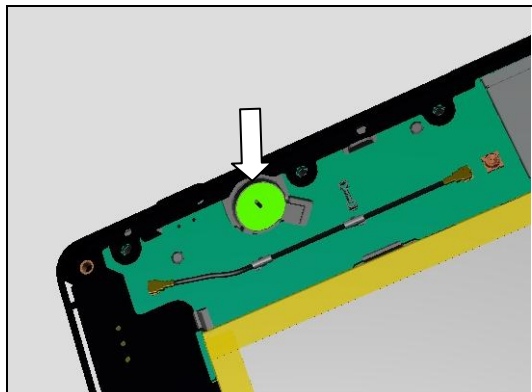
Scrap! Do not reuse



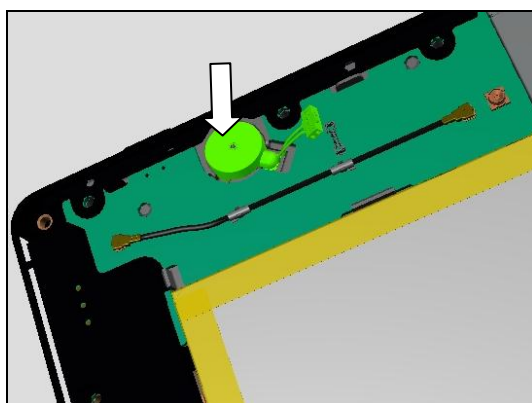
Replacement: Vibrator & Adhesive Vibrator

INSTALLATION

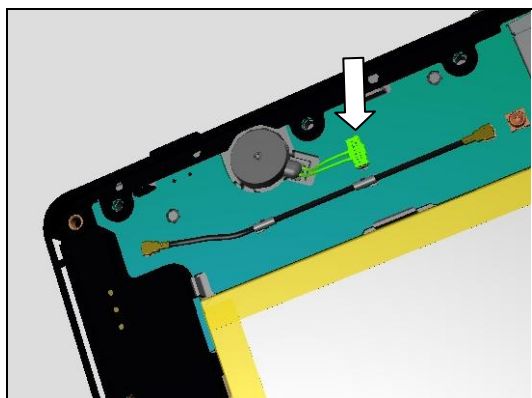
Attach a new Adhesive Vibrator into the cavity and press along to make it securely attached.



Insert a new Vibrator into its cavity with proper position and press to secure its attachment.



Press to snap the connector with fingers.



Replacement

5.31 CU label

Carry out the replacement as described below.

REMOVAL

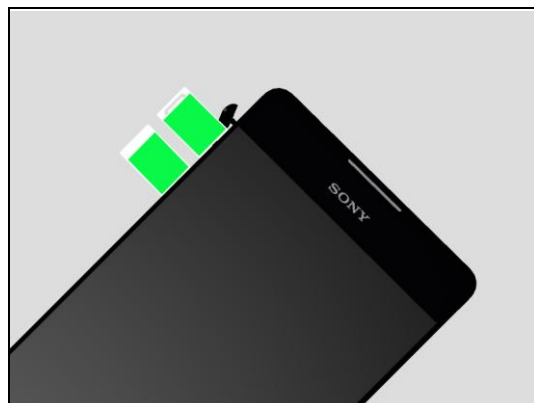
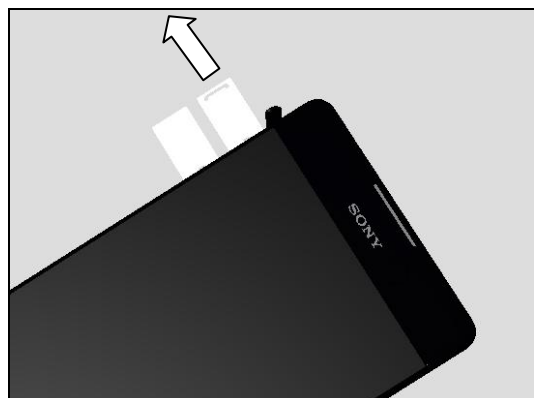
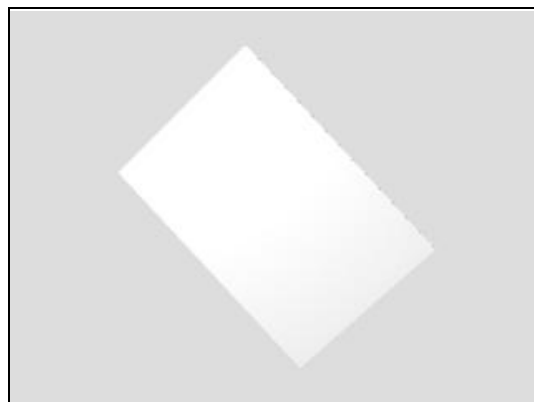
Open the SIM Cap.
Pull out the Label Tray with fingers.

Read the old labels content and/or write the information into the 'Label Print Solution' program before removal.
Carefully remove the CU Labels by using the Flex Film Assembly Tool.

Scrap! Not to be reused!

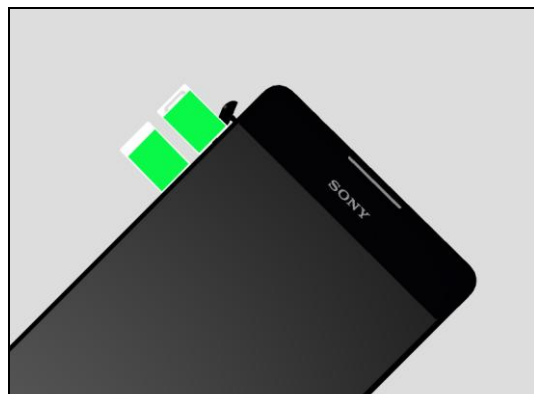
INSTALLATION

Check that the label format is properly loaded in the Zebra printer and write two new CU Labels using the 'Label Print Solution' software.

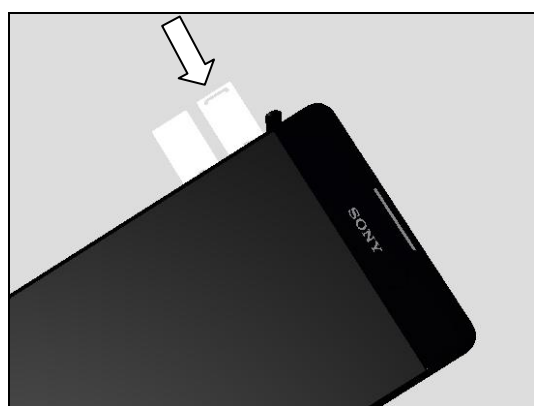


Replacement: Label 0.0 mm x 0.0 mm

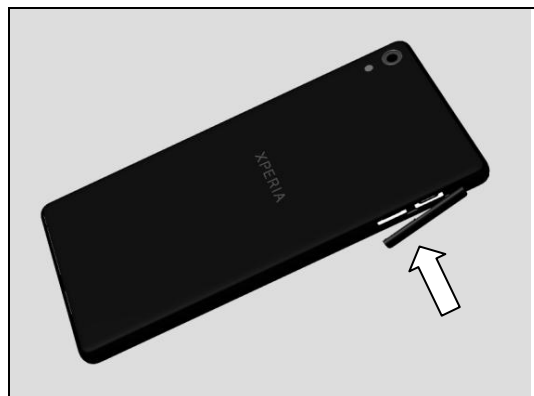
Attach two new CU Labels in proper positions as shown in picture.



Push the Label tray back into the slot



Close the SIM Cap.



Replacement

5.32 Board Swap – Replacement

Follow the 4.1 – 4.6 Disassembly instructions!

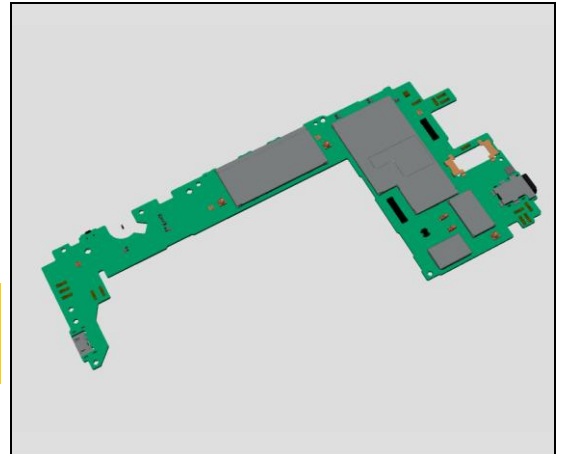
Follow the 5.13-5.15, 5.19 Removal instructions!

Replace the Swap Board.

Follow the 5.13-5.15, 5.19 Installation instructions!

Follow the 6.1 – 6.7 Reassembly instructions!

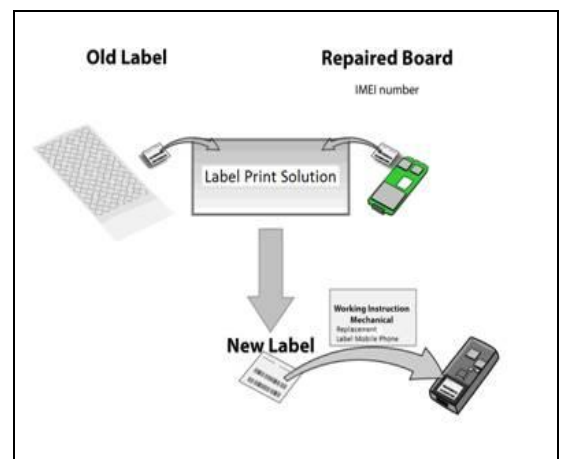
Proximity, Light Sensor and Color ID Flashing must be performed for all replaced units; Sony Mobile Repair Application 1289-2983!



5.33 Board Swap – Change Label

CHANGE LABEL

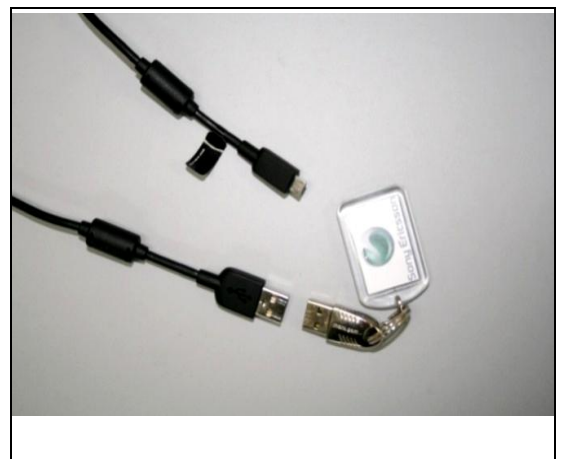
Follow the instructions in the Generic Repair Manual – Build swap for change of label.



5.34 Board Swap – Customize of Software

CUSTOMIZE OF SOFTWARE

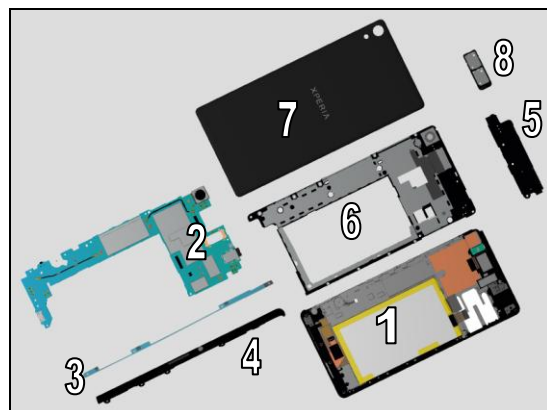
Follow the instructions in the Generic Repair Manual – Build swap for customization of the software.



6 Reassembly

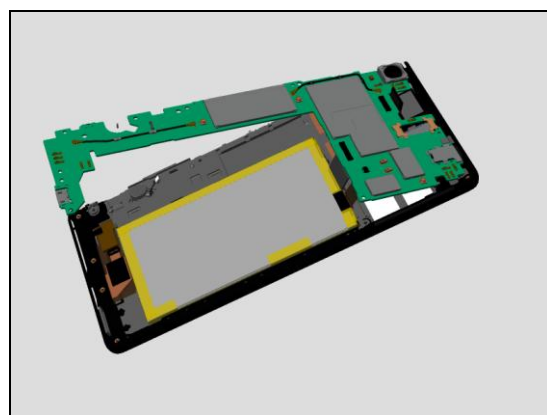
The reassembly is done in the following order:

1. Front Cover Assy
2. Main PBA
3. Adhesive Side Panel Assy Keys Side
4. Side Panel Assy Keys
5. Antenna Module
6. Rear Cover
7. Back Cover Assy
8. SIM Tray



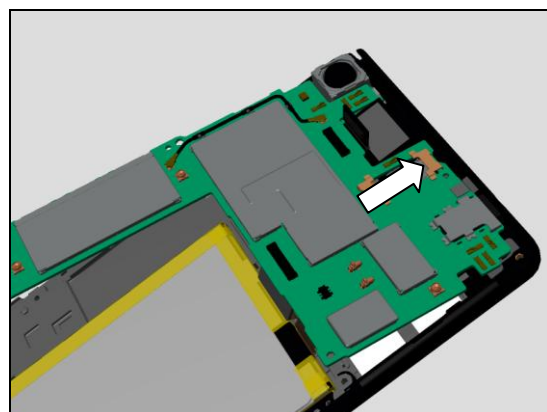
6.1 Front Cover Assy & Main PBA

Prepare the Main PBA Assy above the Front Cover Assy with 30 degrees as shown.

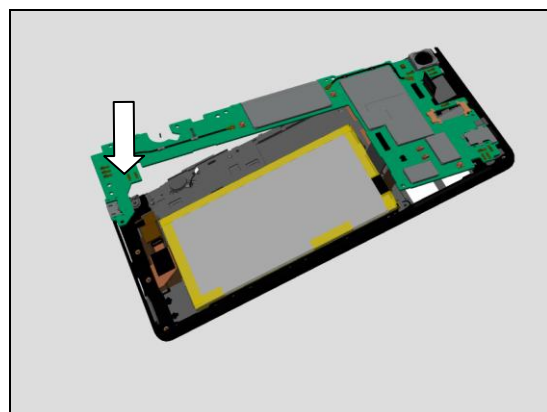


Insert to hook the top side of the Main PBA.

Check all the connectors' position!



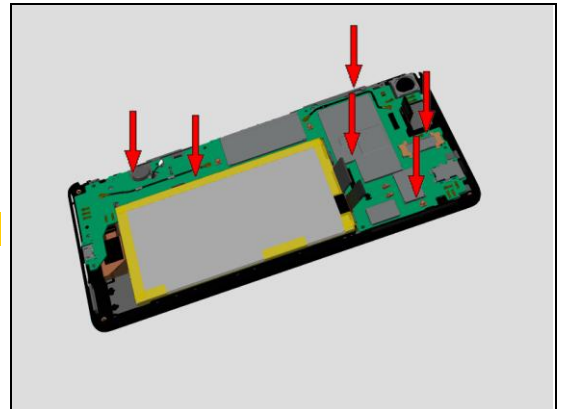
Press down the bottom side with correct position.



Reassembly

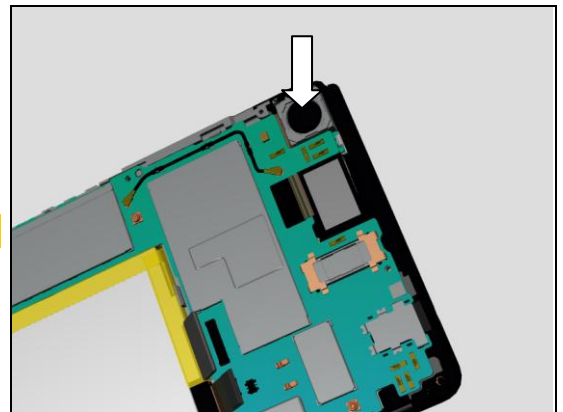
Snap all the hooks as arrows' shown.

Be careful of spring pins!



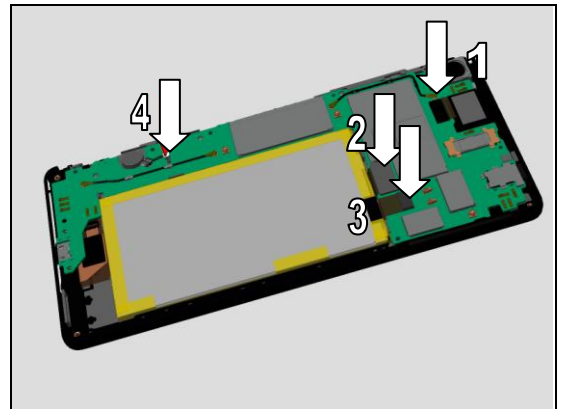
Press the Main Camera into its cavity.

Do not touch the lens!



Press to connect the BtB connectors with fingers:

1. Front Camera BtB connector
2. Display FPC BtB connector
3. Battery FPC BtB connector
4. Vibrator connector

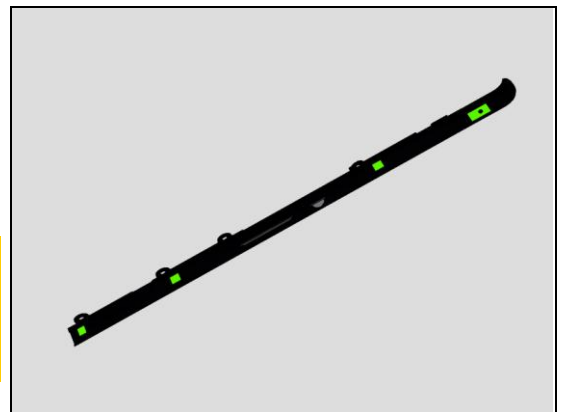


6.2 Adhesive Side Panel Assy Keys Side

Inspect the Side Panel Assy Keys.

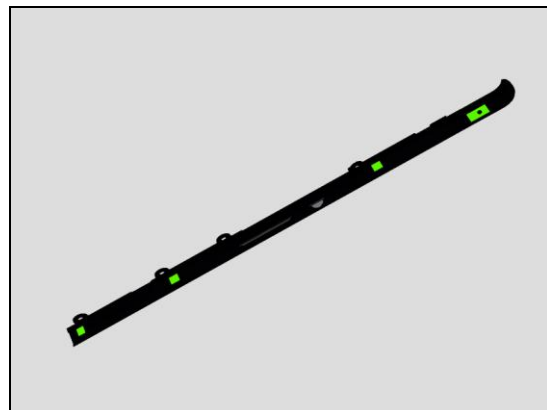
If Side Panel Assy Keys is deformed or keys is damaged, scrap it!

Prepare a new Side Panel Assy Keys and go to chapter 6.3.

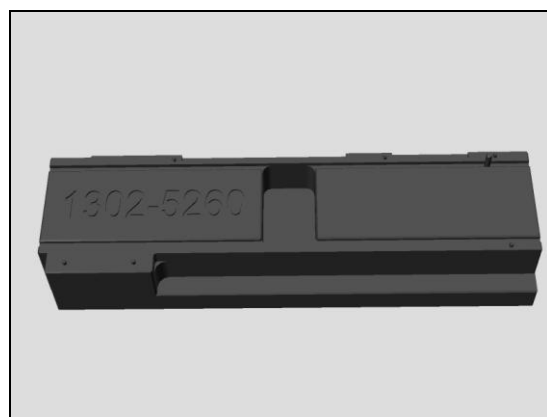


Reassembly

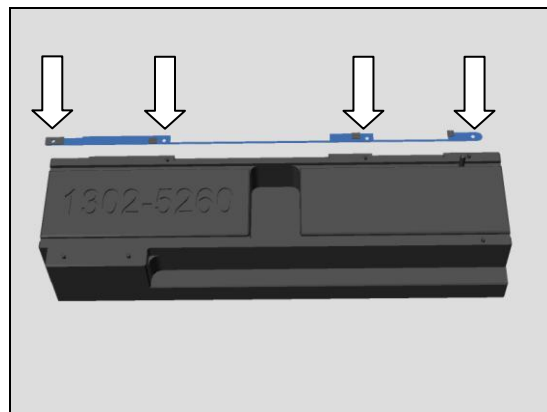
Scrap! Cannot reuse!



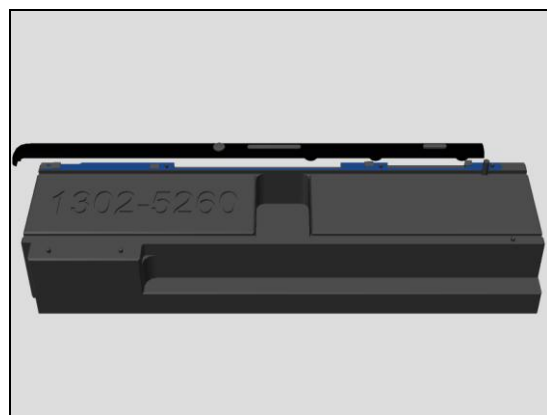
Prepare the Side Panel Adhesive Tool in place.



Put a new Adhesive Side Panel Assy Keys Side on the fixture using the gilding poles and holes as alignment.

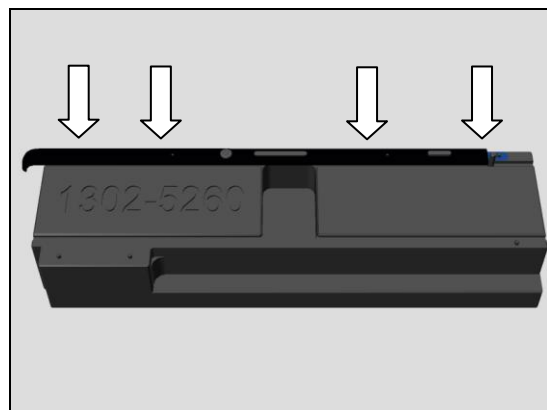


Place the Side Panel Assy Keys above.



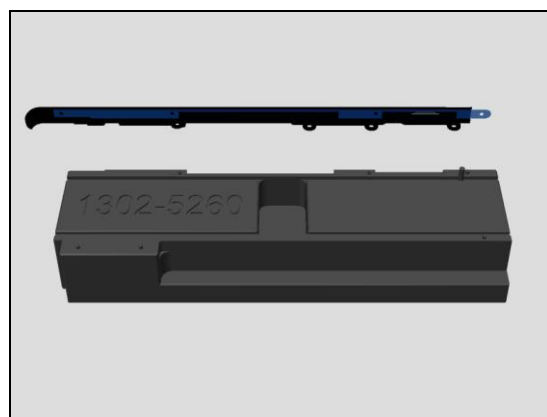
Reassembly

Press long the surface to make it securely attached.



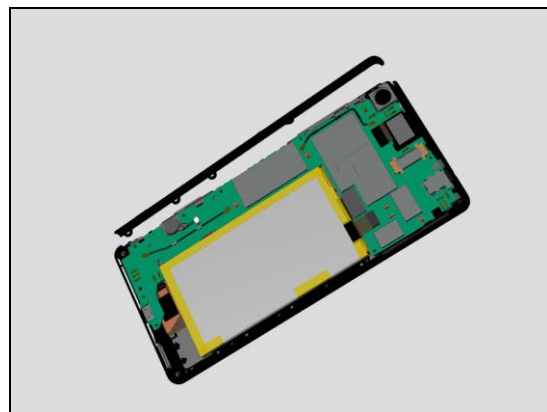
Remove the Side Panel Key with the adhesive.

Remove the adhesive protection film before a new part is used.

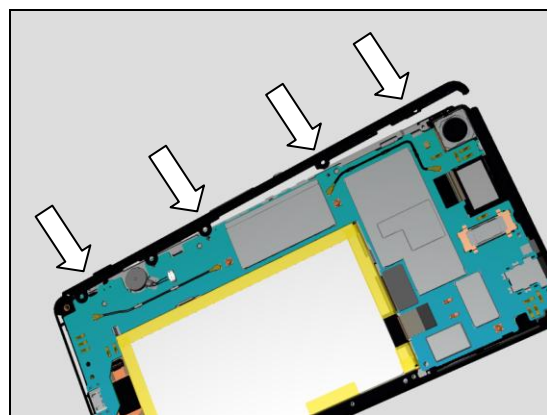


6.3 Side Panel Assy Keys

Prepare the Side Panel Assy Keys in place

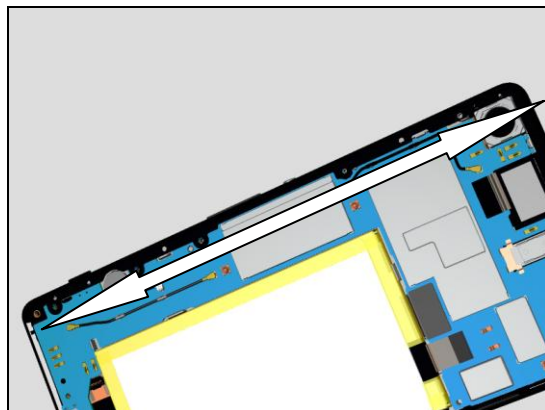


Snap the Side Panel Assy Keys on the side of the Unit by using the six screw nut holes as guiding holes.

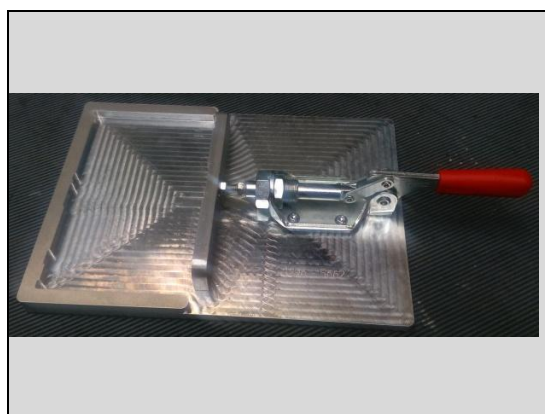


Reassembly

Press long to make sure its position.



Prepare the Side Panel Press Fixture in place



Put the Unit into Side Panel Press Fixture

Make sure the SIM Cap is closed before action!

The unit should be placed with LCD down!

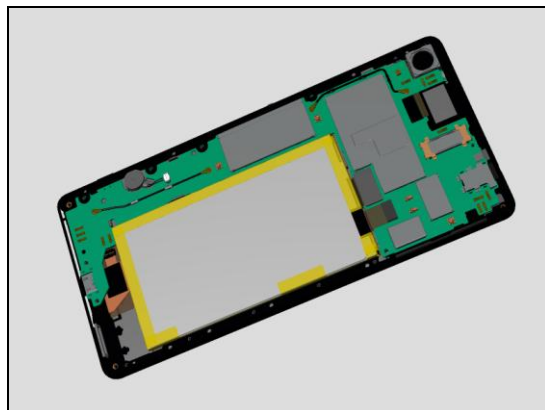


Lift the handle and keep 5 seconds to press both Side Panels.



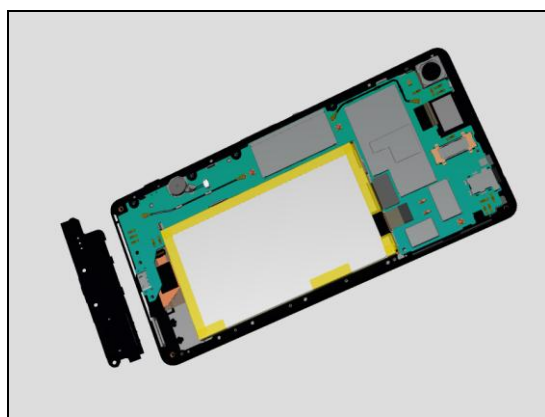
Reassembly

Remove the Unit from the fixture.

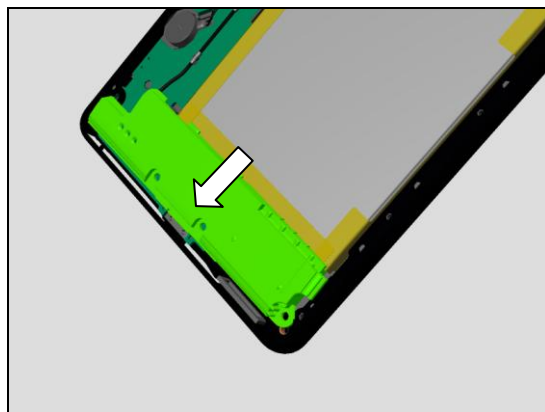


6.4 Antenna Module

Prepare the Antenna Module in place.



Insert the bottom side of Antenna Module to its cavity of the Front Cover Assy as shown in the picture.



Press to snap the hooks.



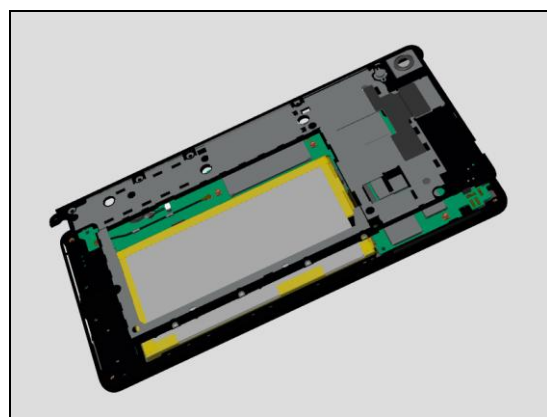
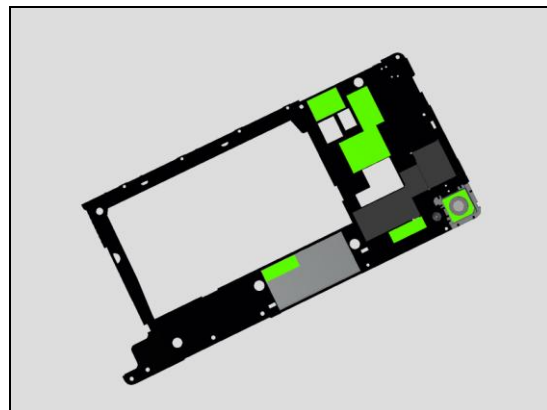
Reassembly

6.5 Rear Cover

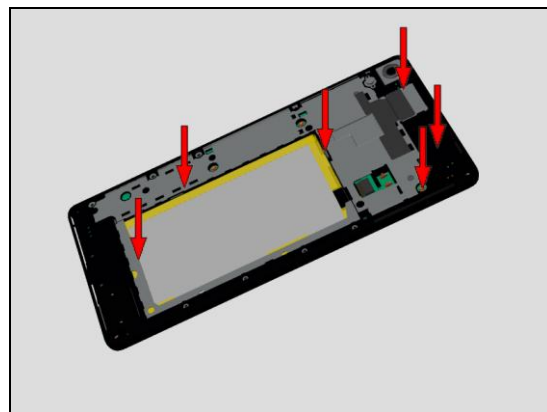
Replace the below five adhesive following:

- 5.8 Main Camera Adhesive
- 5.11 Black Conductive Gasket X 2 pieces
- 5.25 Rear Cover Adhesive 1
- 5.26 Rear Cover Adhesive 2

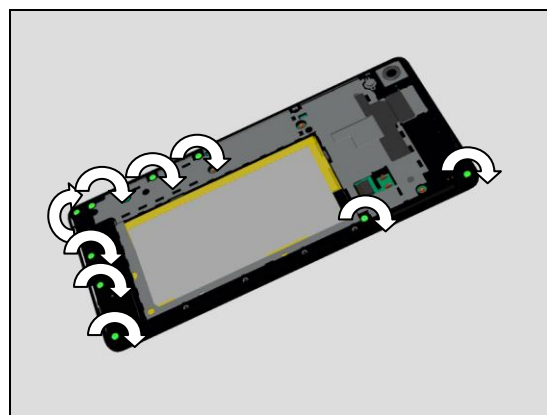
Place the Rear Cover in position



Press Rear Cover four sides around and area of Adhesive Rear Cover to secure it snapped and attached.

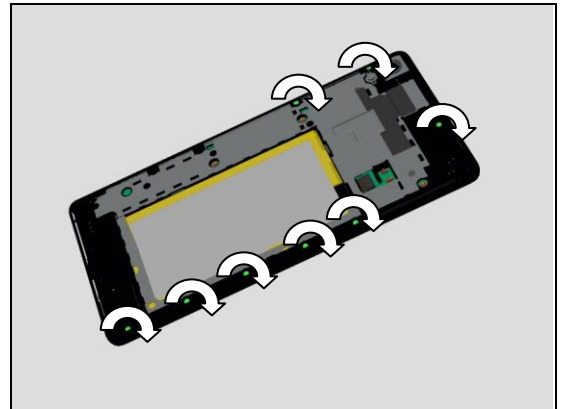


Apply 8 ± 1 Ncm torque when tightening nine new Screws with T5.



Reassembly

Apply 4 ± 1 Ncm torque when tightening eight new Screws with T3.



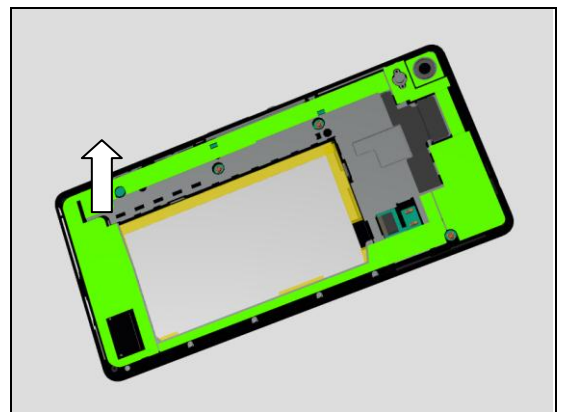
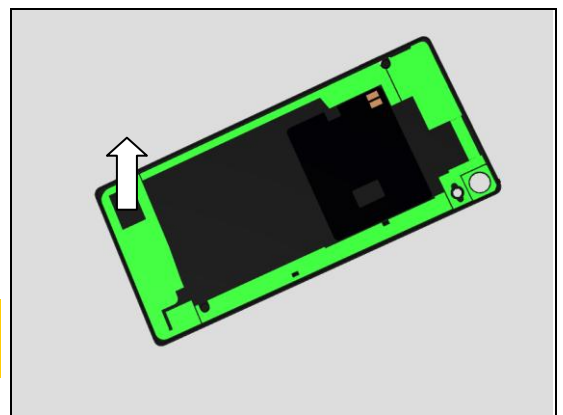
6.6 Back Cover Assy

Remove the old Adhesive Back Cover and Adhesive Main Camera of Back Cover.

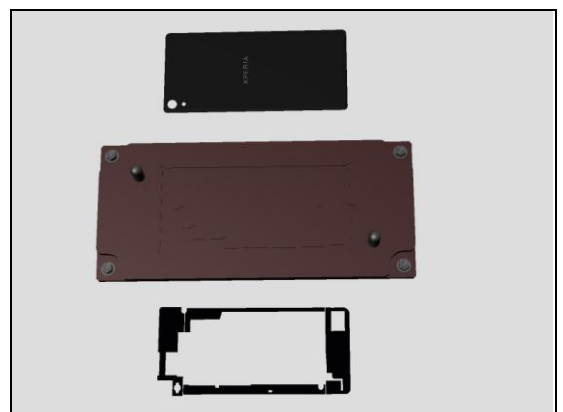
Clean the edges of the Back Cover Assy carefully with alcohol before the new adhesives are mounted.

Scrap! Not to be reused!

Do not damage or scratch the Back Cover!



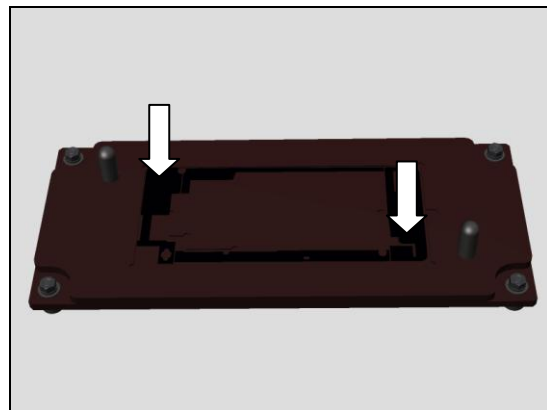
Do the same of the other side.



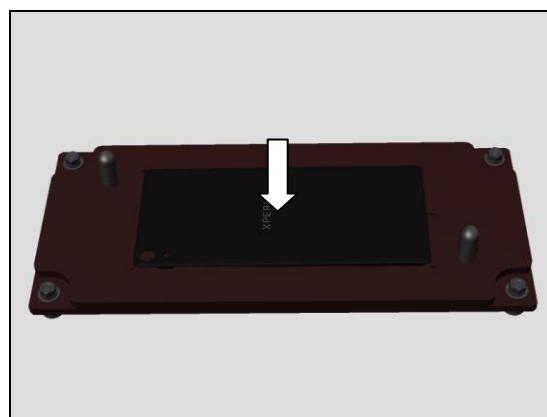
Prepare the Rear Panel Adhesive Tool in place.

Reassembly

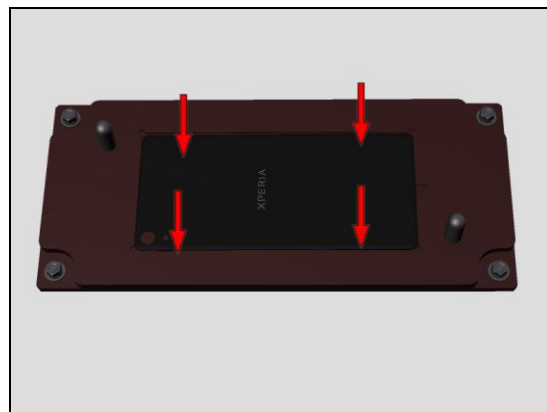
Place a new Adhesive Back Cover with protection film onto the Rear Panel Adhesive Tool.



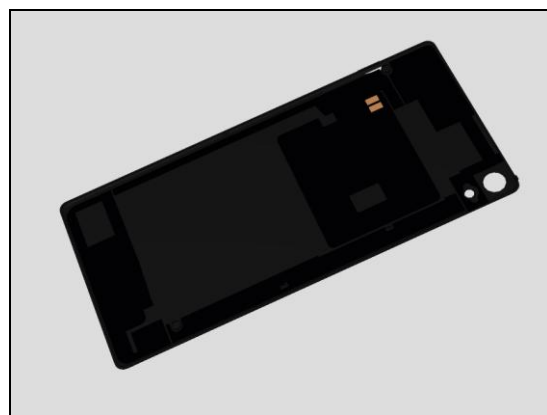
Place the Back Cover Assy on the Adhesive Back Cover by using Camera hole and guiding poles on the fixture as alignment.



Press for 3 seconds to secure the attachment.

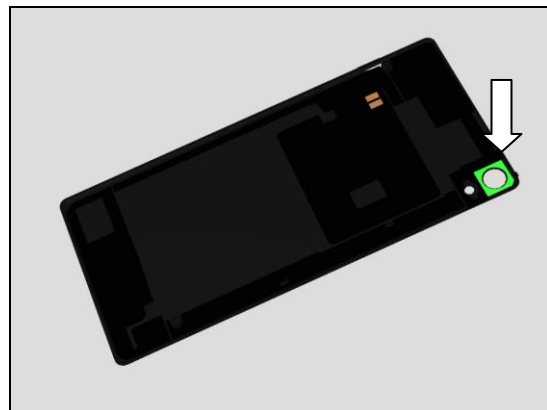


Remove the Back Cover Assy from the Fixture and turn it over.



Reassembly

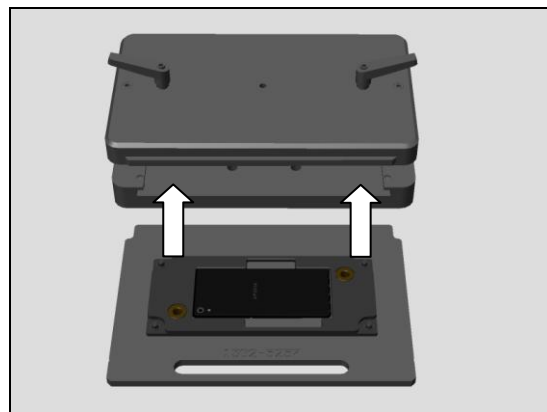
Attach a new Adhesive Main Camera of Back Cover into its cavity in correct direction of the Back Cover Assy as shown.



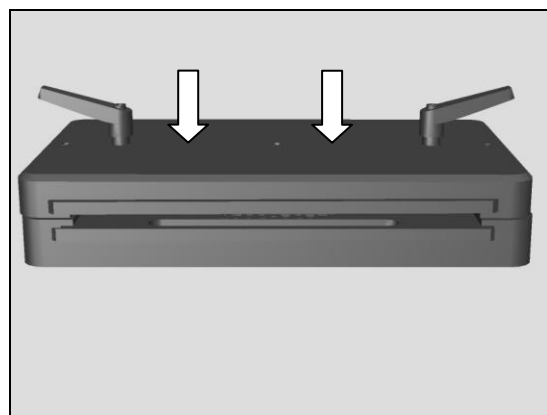
Place the Back Cover Assy on the Front Cover Assy with good alignment.



Place the phone in the Bottom Press Inlay and follow the instruction in 1003-9107 Tool Catalogue – mechanical and document Toothed Rack Press Instruction for use.



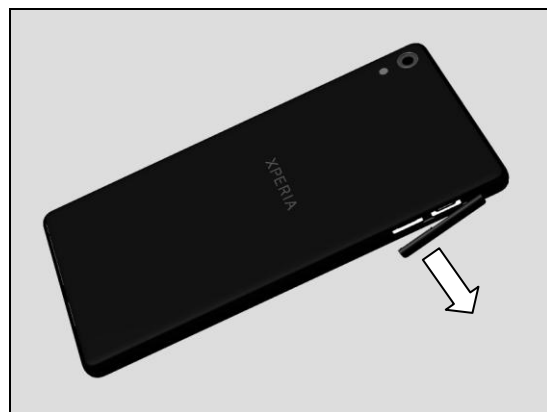
Press with a pressure value of $300\text{N} \pm 10\%$ for 10 seconds.



Reassembly

6.7 SIM Tray

Open the SIM Cap.



Insert the SIM Tray with fingers.

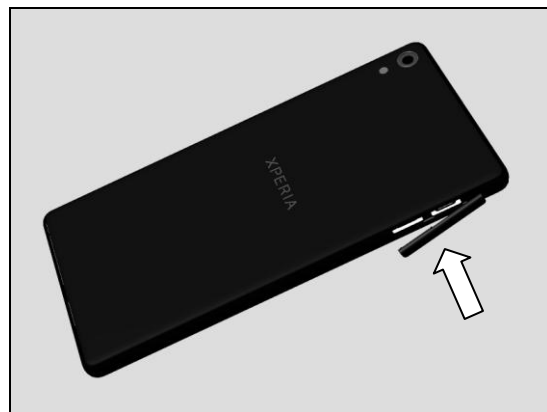


Close the SIM Cap.

Proximity, Light Sensor Calibration must be performed after reassembly!

Color ID Flashing must be performed if Main PBA is replaced!

For Calibration, refer to Sony Mobile Repair Application 1289-2983!



7 Revision History

Rev.	Date	Changes / Comments
1	2016-June-10	Release
2	2016-July-01	Update Mandatory Replacement Part List Update chapter 5.12 & 5.28
3	2016-July-11	Add Battery handling caution on Page 3
4	2016-Aug-15	Update Mandatory Replacement Part List